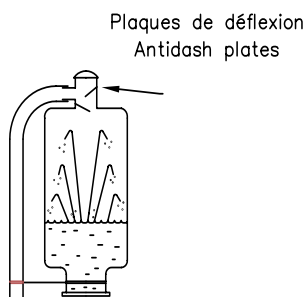


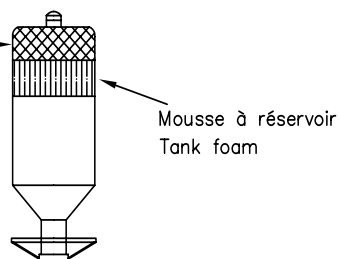
Dessin/Drawing 251-1

tuyau flexible / flexible pipe  
D intérieur / internal D : 20mm

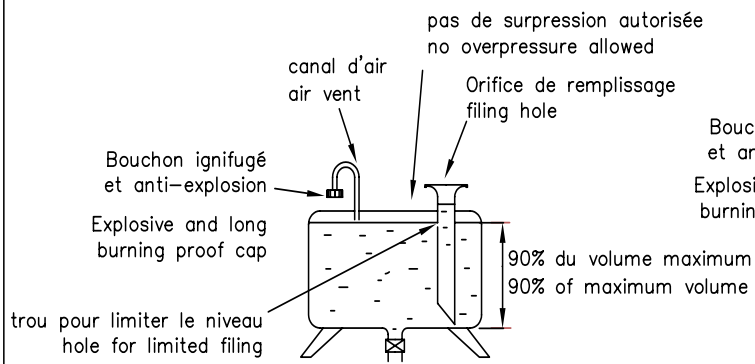


Dessin/Drawing 252-1

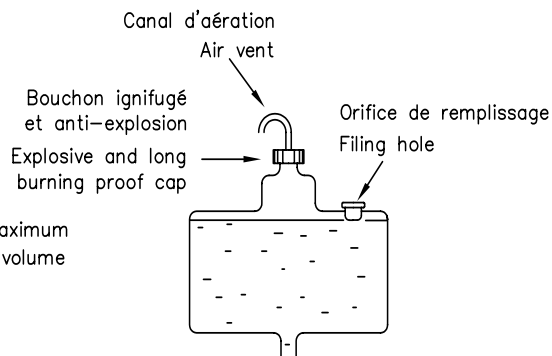
polyéthylène  
polyethylene



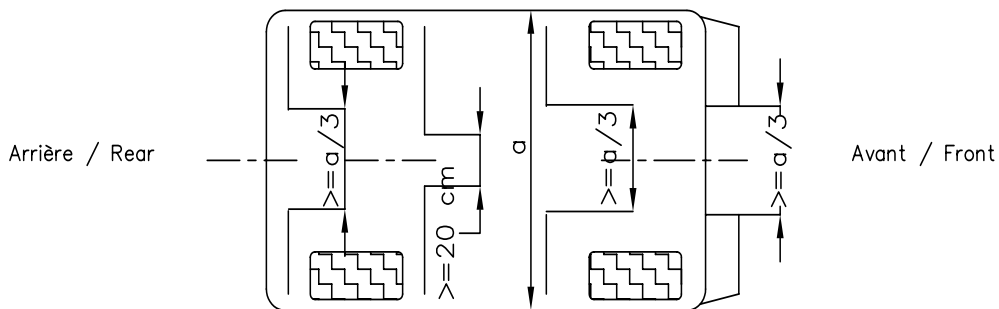
Dessin/Drawing 252-2



Dessin/Drawing 252-3

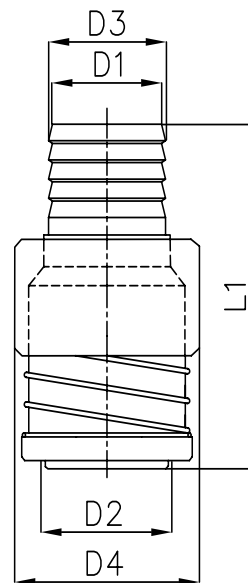


Dessin/Drawing 252-4



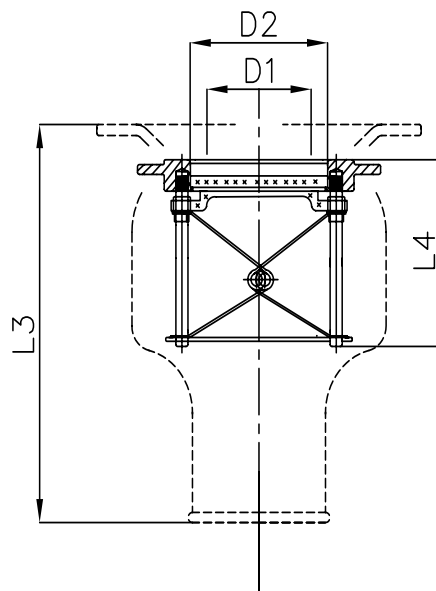
Dessin/Drawing 252-6

	D1	D2	D3	D4	L1
PP20M	2.0"	2.5"	2.25"	3.7"	6.3"
PP20MR	1.5"	2.5"	1.75"	3.7"	6.3"
PF20MS	1.5"	2.5"		3.7"	6.9"
PP15M	1.5"	2.0"	1.75"	3.3"	5.7"
PF30M	1.25"	1.65"	1.45"	2.68"	4.64"
PF40M	1.25"	1.65"	1.45"	2.68"	4.64"
PP125M	1.25"	1.75"	1.5"	2.9"	5.1"



Prise male / Push pull series male

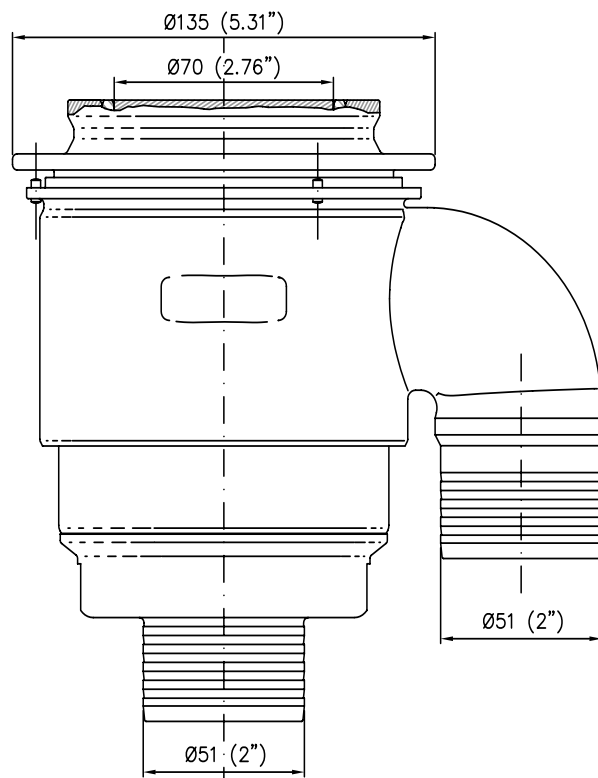
	D1	D2	L3	L4
PP20F	2.0"	2.5"	6.75"	3.25"
PP20FR	2.0"	2.5"	6.75"	3.25"
PF31F	1.75"	2.12"	5.3"	3"
PF41F	1.75"	2.12"	5.7"	3.38"
PP15F	1.5"	2.0"	6.75"	3.25"
PP125F	1.25"	1.75"	6.25"	3.1"



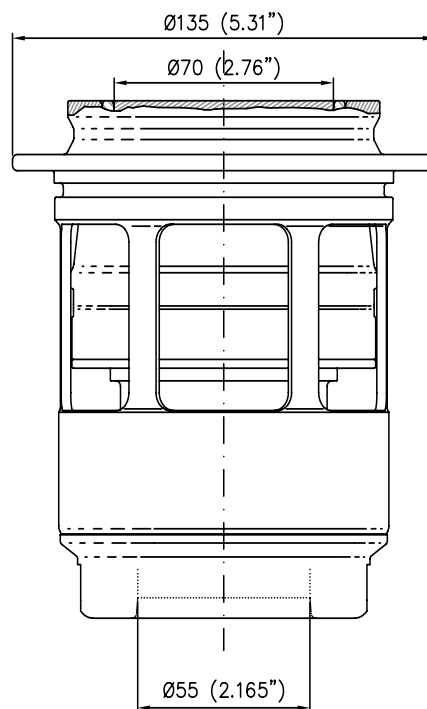
Prise femelle / Push pull series female

Dessin/Drawing 252-5 version A

Montage sur carrosserie  
Mounting on bodywork

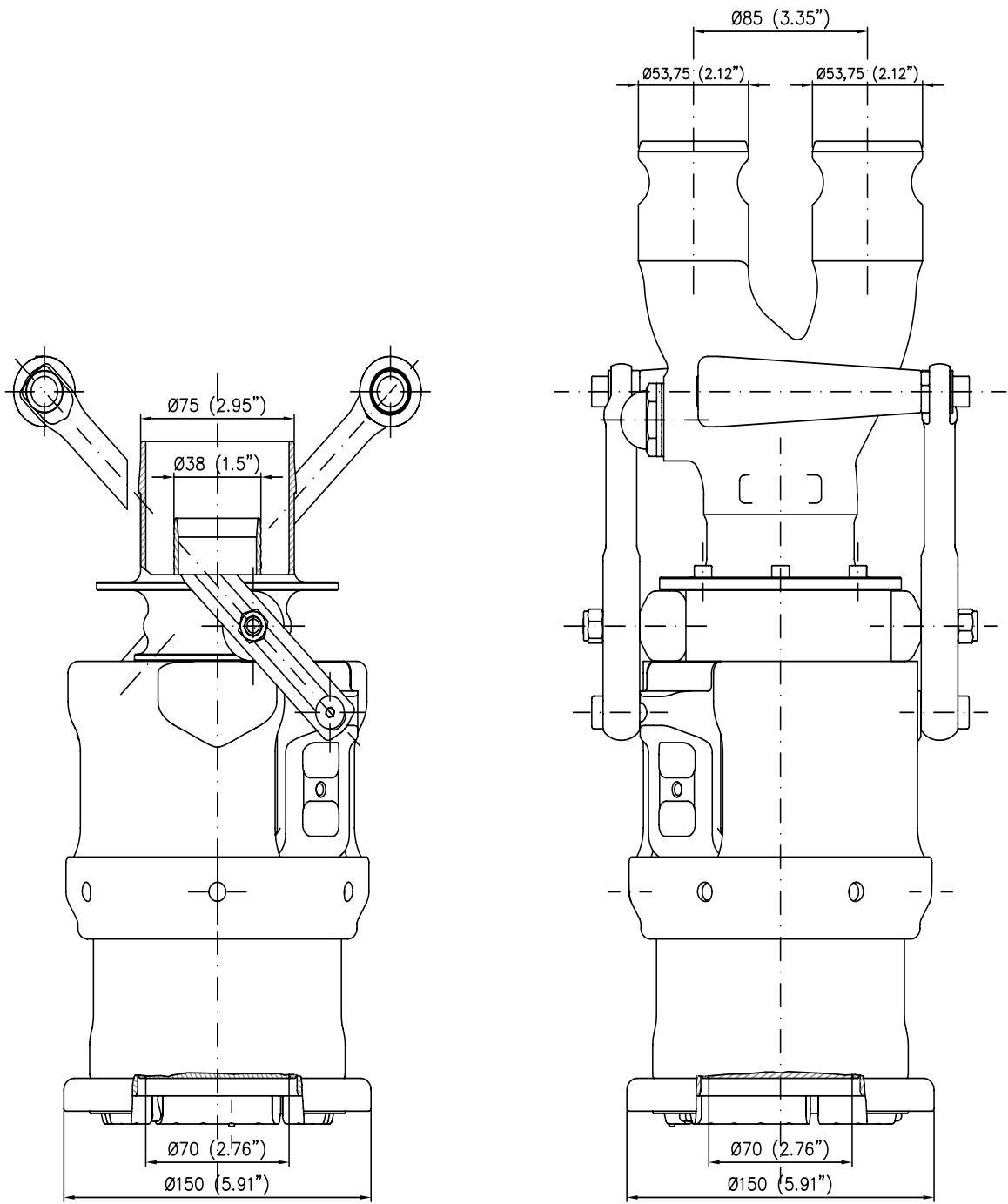


Montage sur réservoir  
Mounting on tank



Dessin/Drawing 252-5 version B

Accoupleur femelle / Female coupling

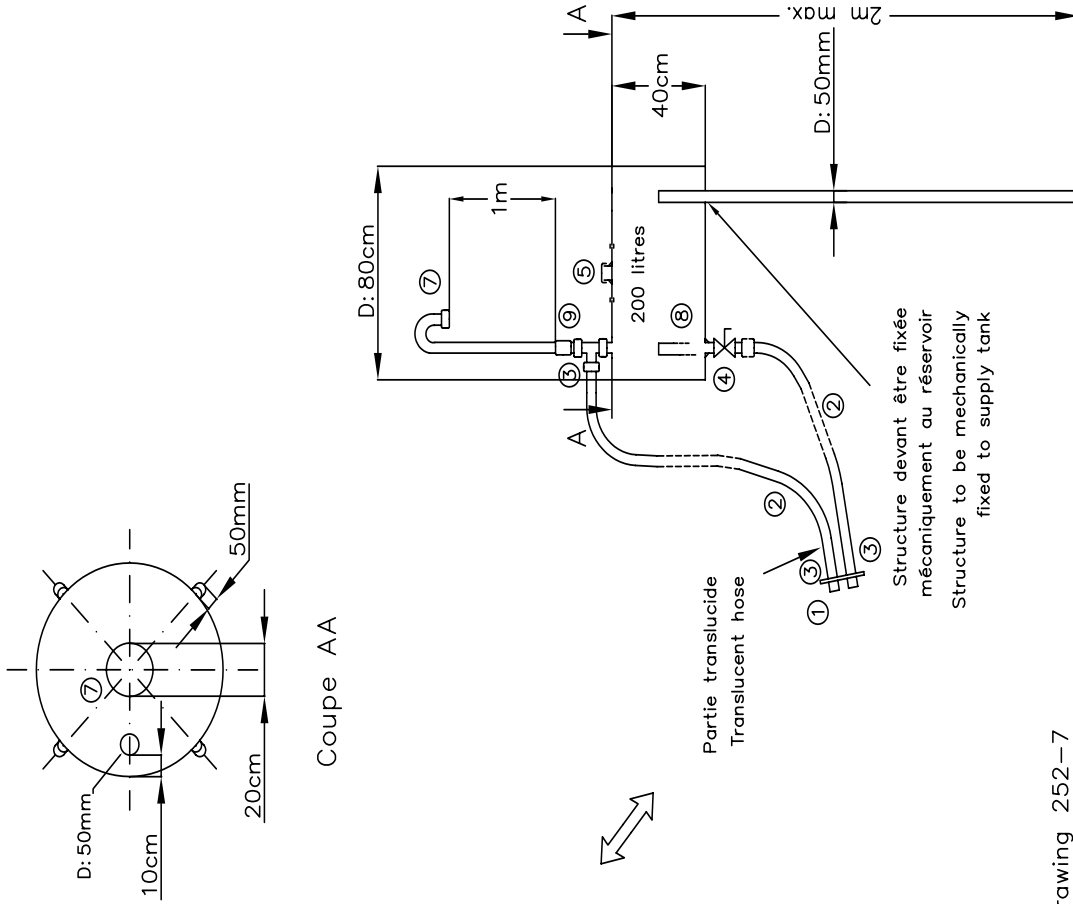


Coaxial

Parallèle / Parallel

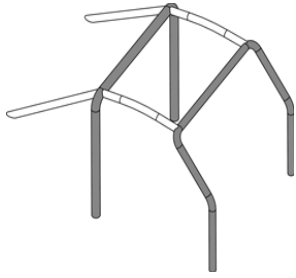
Dessin/ Drawing 252-5 version B

Accoupleur mâle / Male coupling

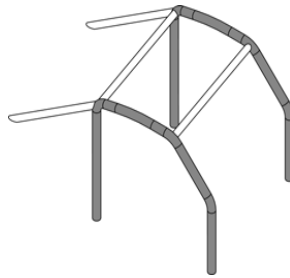


- ① Accoupleurs / Male refuelling valves (dessin / drawing 252-5)
- ② Flexible de diamètre intérieur / Hose internal diameter 38mm
- ③ Raccord rapide, diamètre intérieur / Quick coupling, internal diameter 38mm
- ④ Vanne autobloquante de diamètre intérieur / Self closing valve, internal diameter 38mm
- ⑤ Orifice de remplissage (autobloquant) / Filler (dry break)
- ⑦ Arête flamme / Flame arrester
- ⑧ Resitricteur / Flow restrictor (dessin / drawing 258-3)
- ⑨ Valve de séparation / Discriminator valve

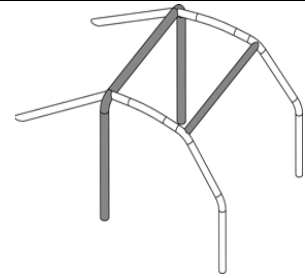
Dessin/Drawing 252-7



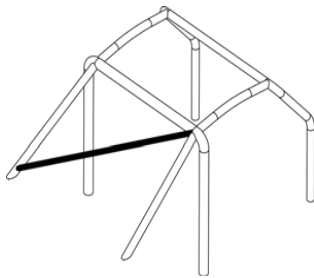
Dessin/Drawing 253-1



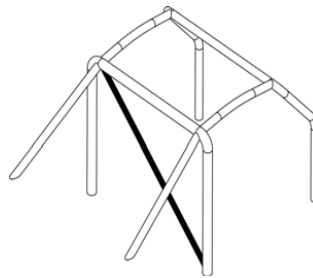
Dessin/Drawing 253-2



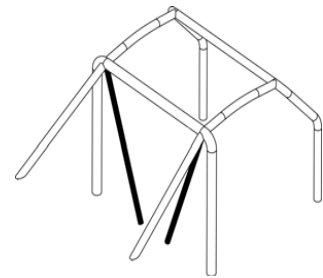
Dessin/Drawing 253-3



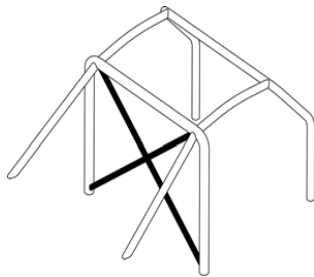
Dessin/Drawing 253-4



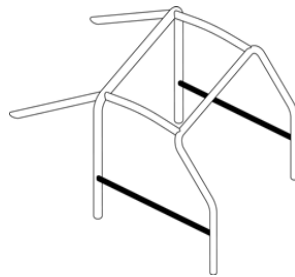
Dessin/Drawing 253-5



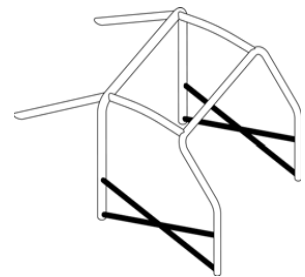
Dessin/Drawing 253-6



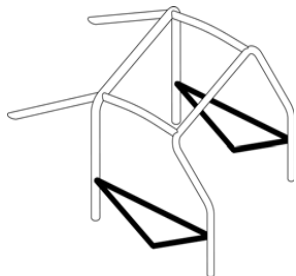
Dessin/Drawing 253-7



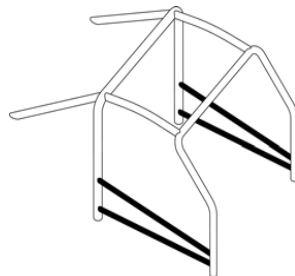
Dessin/Drawing 253-8



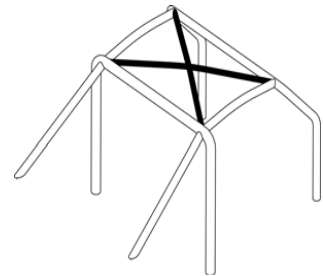
Dessin/Drawing 253-9



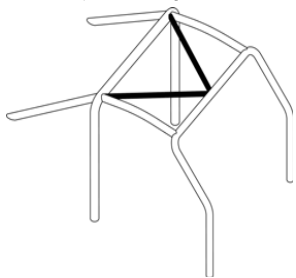
Dessin/Drawing 253-10



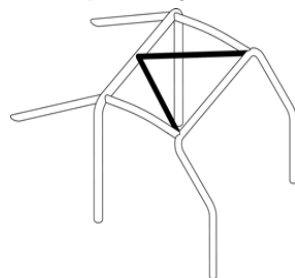
Dessin/Drawing 253-11



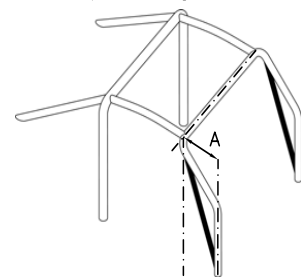
Dessin/Drawing 253-12



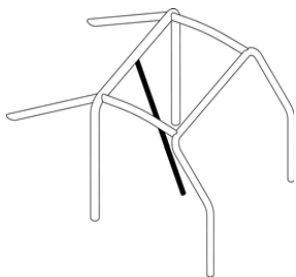
Dessin/Drawing 253-13



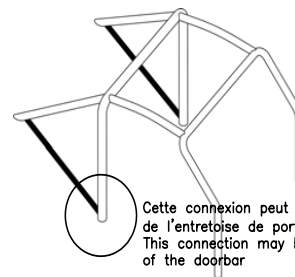
Dessin/Drawing 253-14



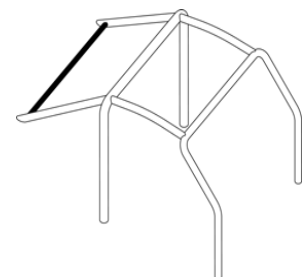
Dessin/Drawing 253-15



Dessin/Drawing 253-16

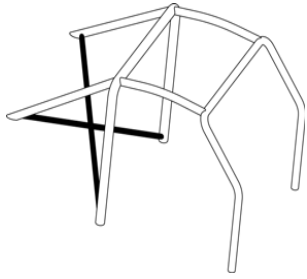


Dessin/Drawing 253-17

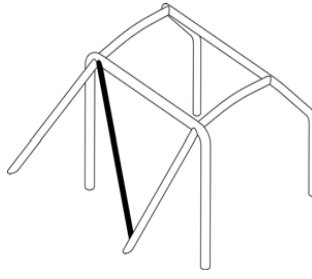


Dessin/Drawing 253-18

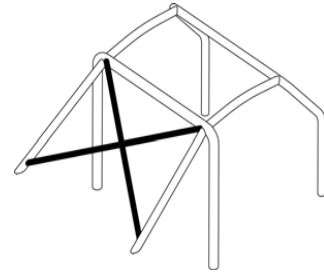
Cette connexion peut être au niveau de l'entretoise de portière  
This connection may be at the level of the doorbar



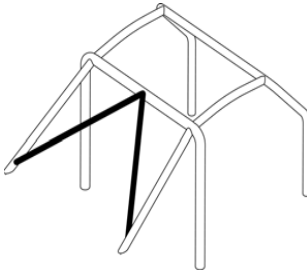
Dessin/Drawing 253-19



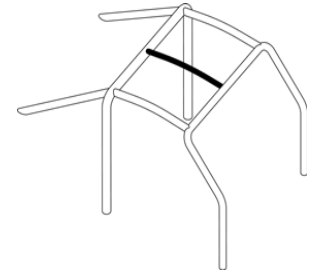
Dessin/Drawing 253-20



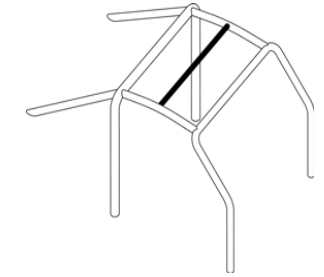
Dessin/Drawing 253-21



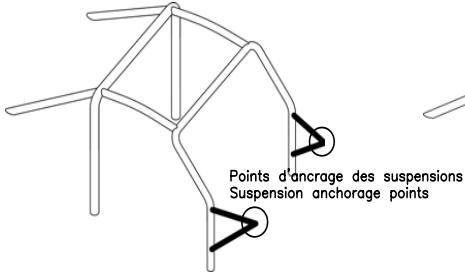
Dessin/Drawing 253-22



Dessin/Drawing 253-23

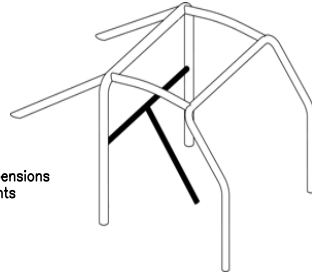


Dessin/Drawing 253-24

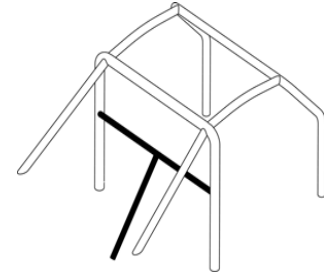


Points d'ancrage des suspensions  
Suspension anchorage points

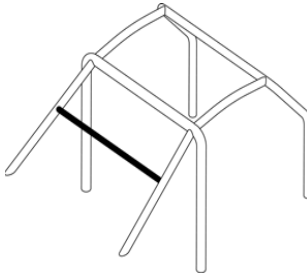
Dessin/Drawing 253-25



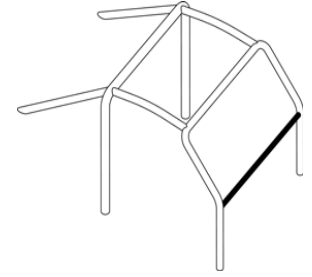
Dessin/Drawing 253-26



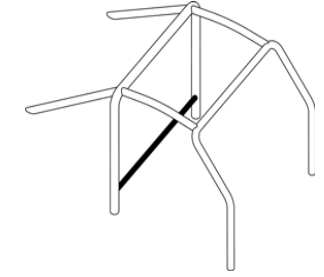
Dessin/Drawing 253-27



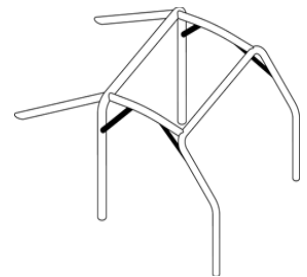
Dessin/Drawing 253-28



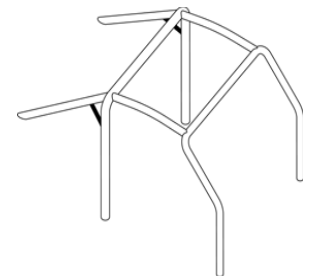
Dessin/Drawing 253-29



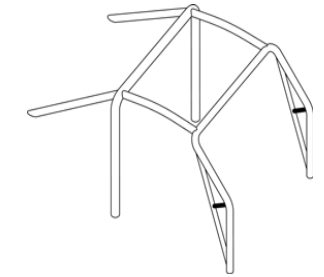
Dessin/Drawing 253-30



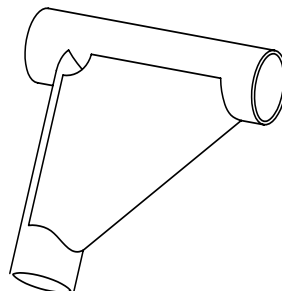
Dessin/Drawing 253-31



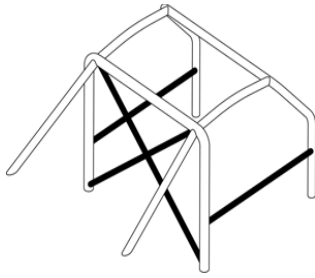
Dessin/Drawing 253-32



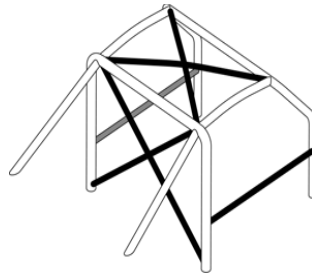
Dessin/Drawing 253-33



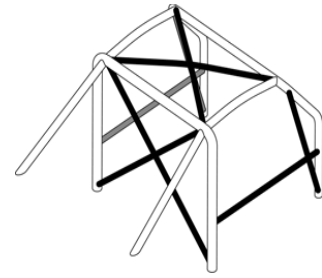
Dessin/Drawing 253-34



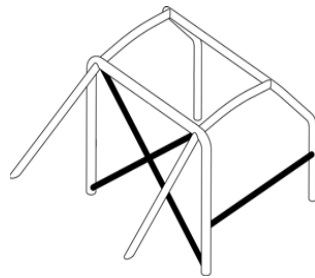
Dessin/Drawing 253-35A



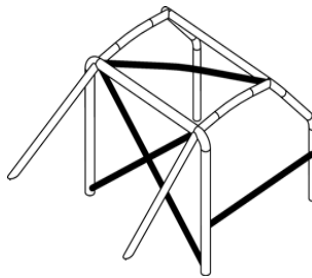
Dessin/Drawing 253-35B



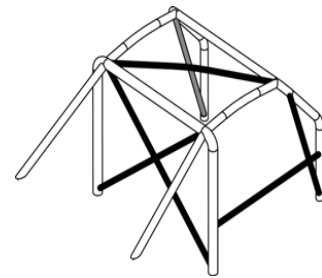
Dessin/Drawing 253-35C



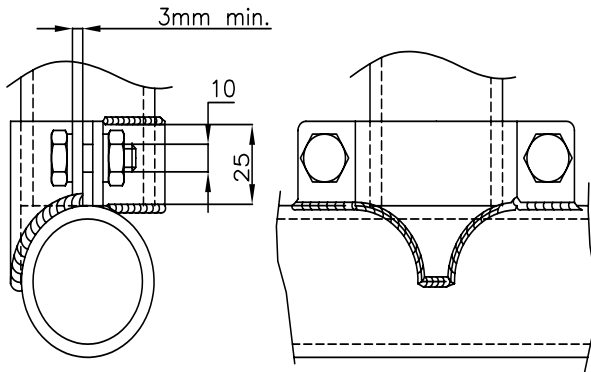
Dessin/Drawing 253-36A



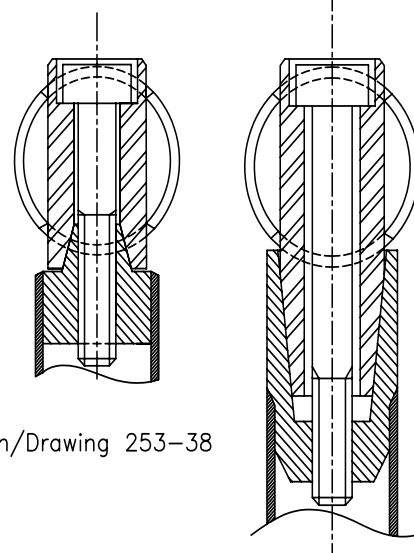
Dessin/Drawing 253-36B



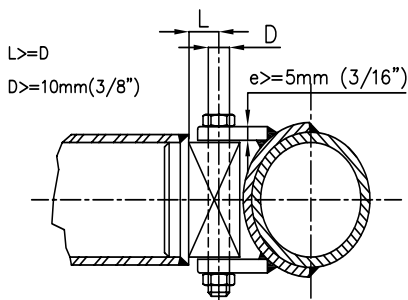
Dessin/Drawing 253-36C



Dessin/Drawing 253-37

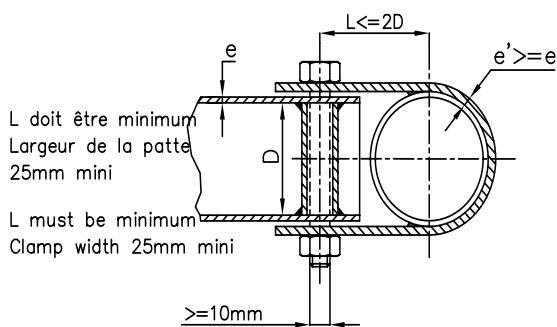


Dessin/Drawing 253-38

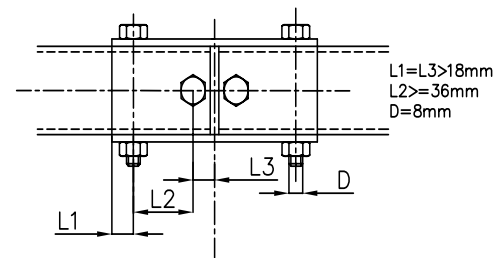


Dessin/Drawing 253-40

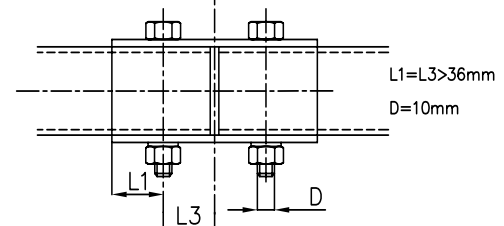
Dessin/Drawing 253-39



Dessin/Drawing 253-43



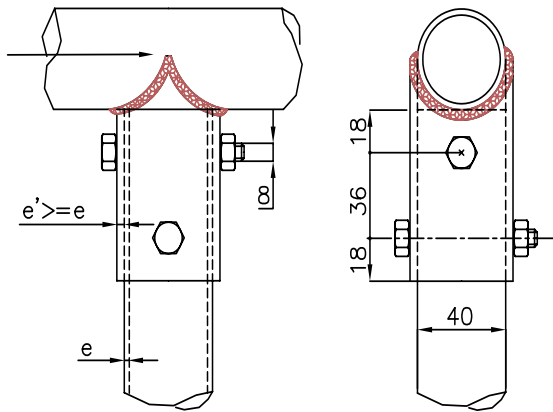
Dessin/Drawing 253-41



Dessin/Drawing 253-42

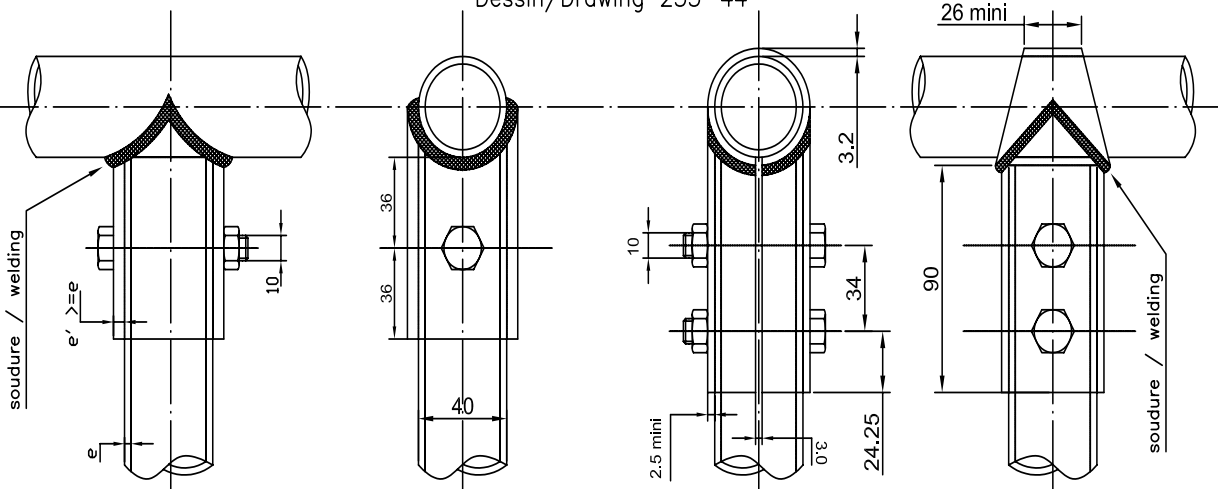


soudure  
welding



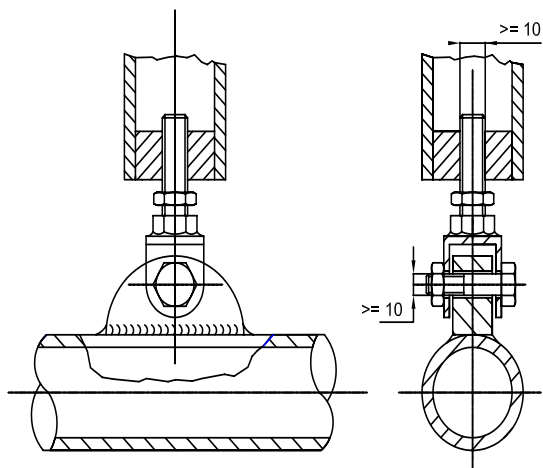
(Dimensions en/in mm)

Dessin/Drawing 253-44

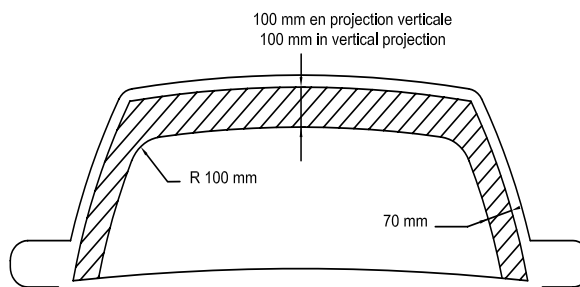


Dessin/Drawing 253-45

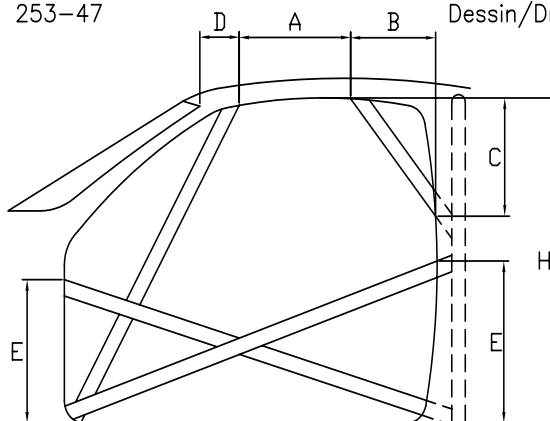
Dessin/Drawing 253-46



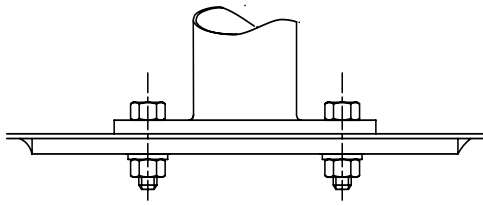
Dessin/Drawing 253-47



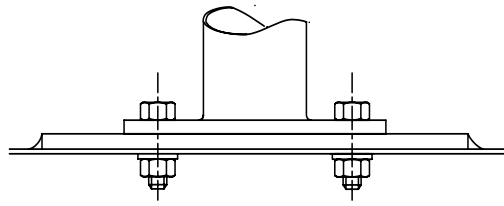
Dessin/Drawing 253-48



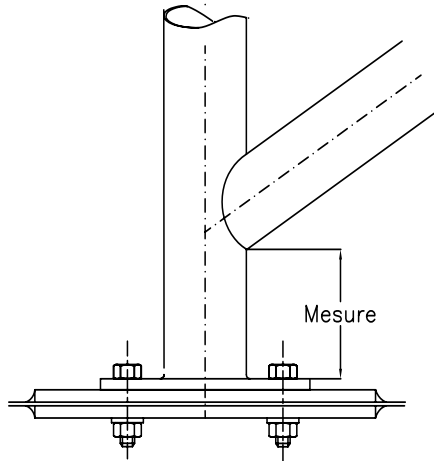
Dessin/Drawing 253-49



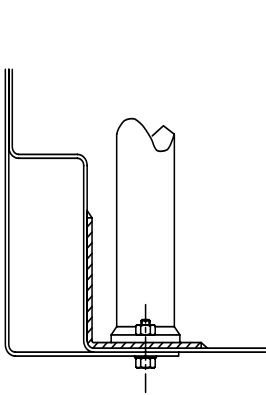
Dessin/Drawing 253-50



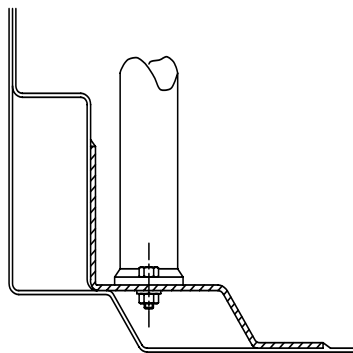
Dessin/Drawing N°253-51



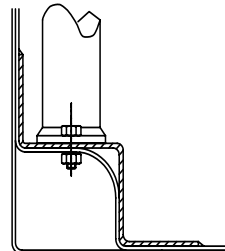
Dessin/Drawing 253-52



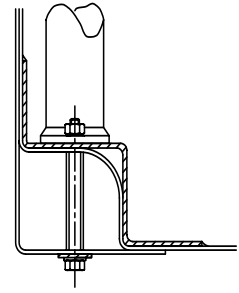
Dessin/Drawing 253-53



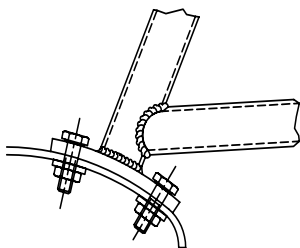
Dessin/Drawing 253-54



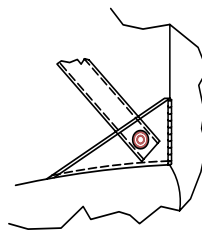
Dessin/Drawing 253-55



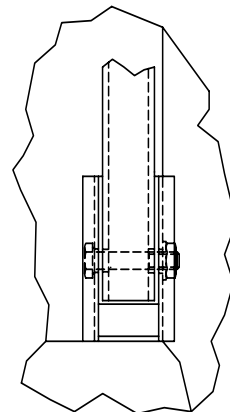
Dessin/Drawing 253-56

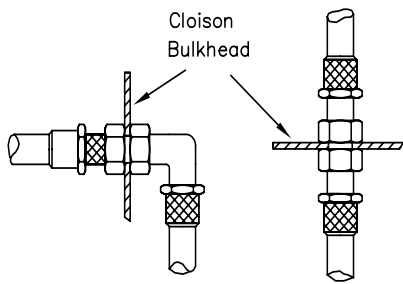


Dessin/Drawing 253-57

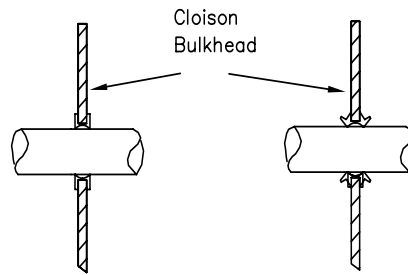


Dessin/Drawing 253-58

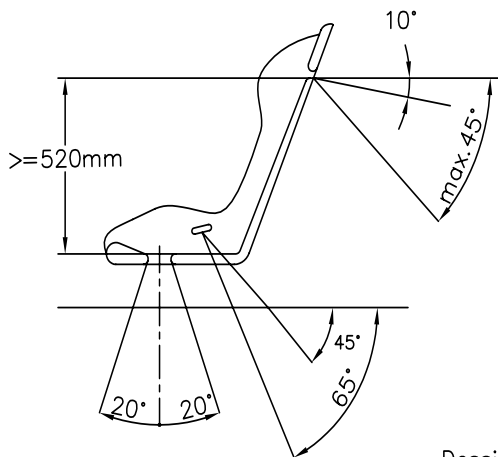




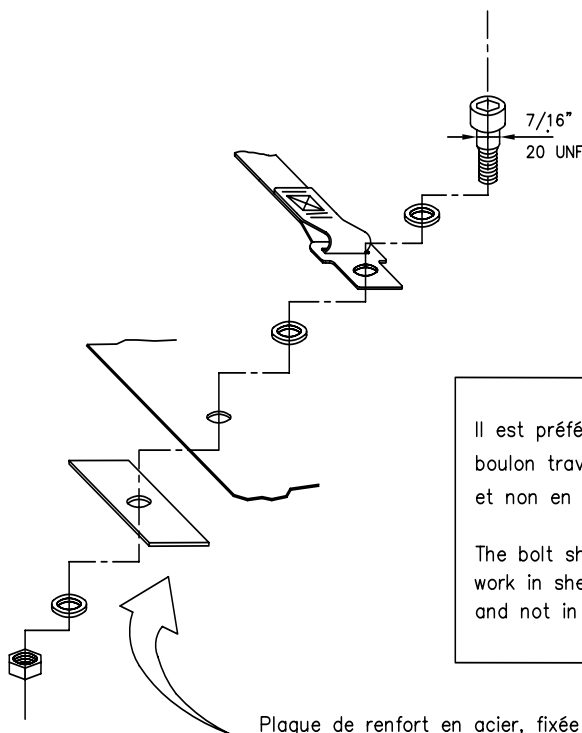
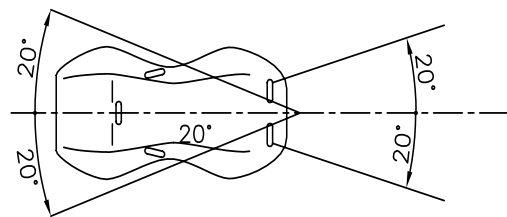
Dessin/Drawing 253-59



Dessin/Drawing 253-60



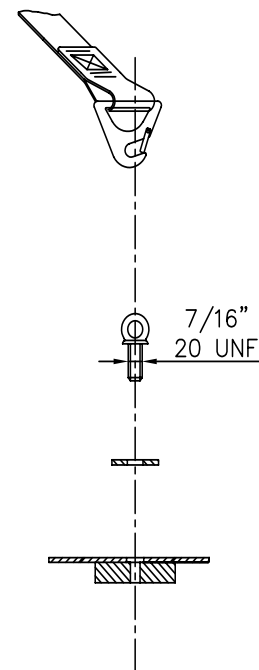
Dessin/Drawing 253-61



Il est préférable que le  
boulon travaille en cisaillement  
et non en traction

The bolt should preferably  
work in shearing stress  
and not in traction

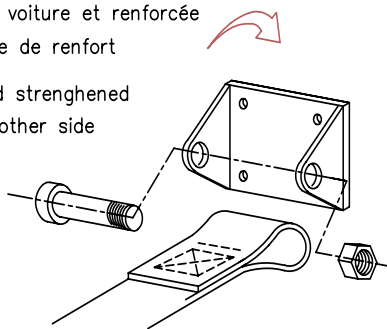
Plaque de renfort en acier, fixée  
au châssis de la voiture  
Steel reinforcing plate fixed  
to the car's chassis



Dessin/Drawing 253-62

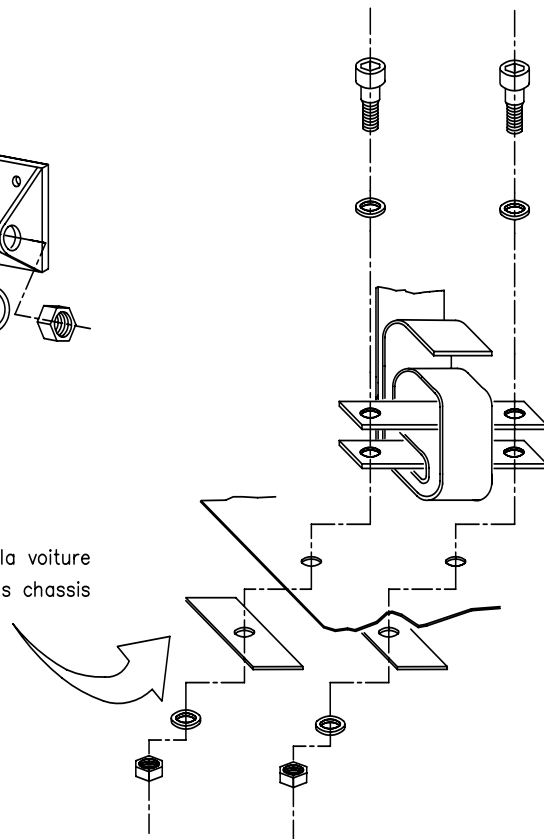
plaque fixée au châssis de la voiture et renforcée de l'autre côté par une plaque de renfort

plate fixed to the chassis and strengthened by a reinforced plate on the other side

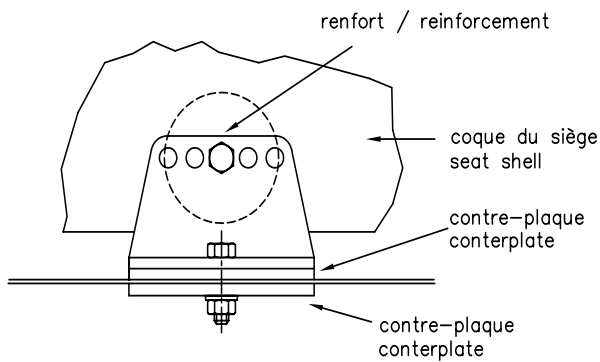


Dessin/Drawing 253-63

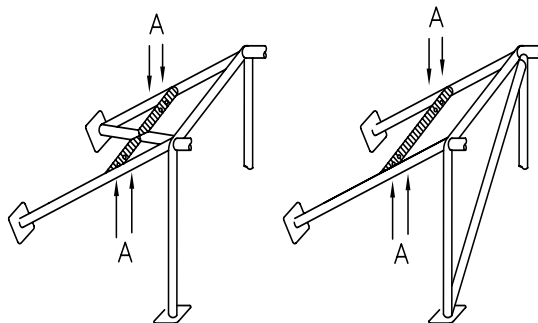
plaque de renfort fixée au châssis de la voiture  
reinforcing plate fixed to the car's chassis



Dessin/Drawing 253-64

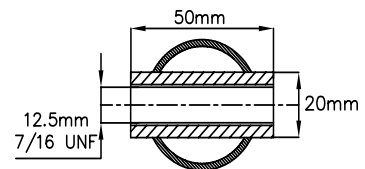


Dessin/Drawing 253-65



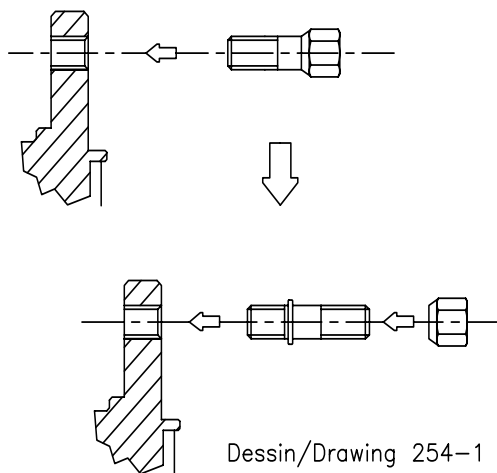
Ⓐ trous de montage pour harnais  
mounting holes for harness

Dessin/Drawing 253-66

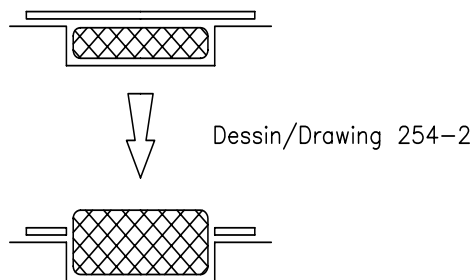


Agrandissement de A  
Magnification of A

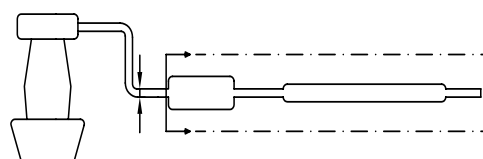
Dessin/Drawing 253-67



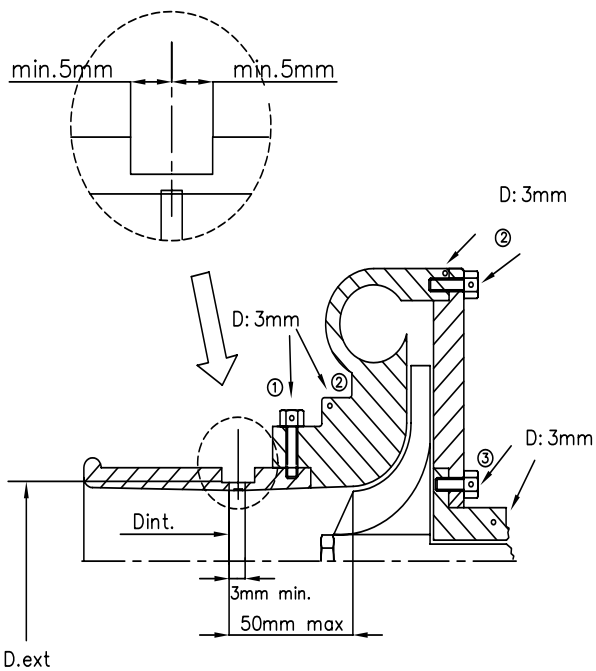
Dessin/Drawing 254-1



Dessin/Drawing 254-2



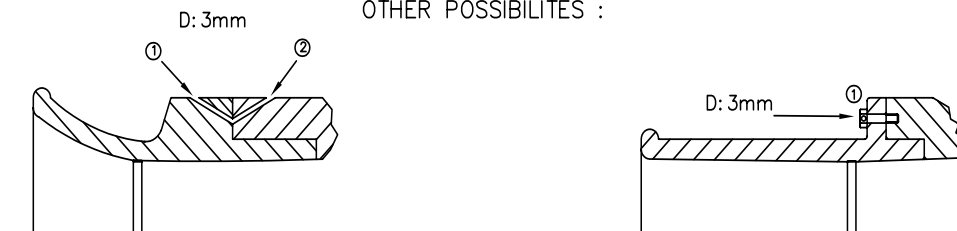
Dessin/Drawing 254-3



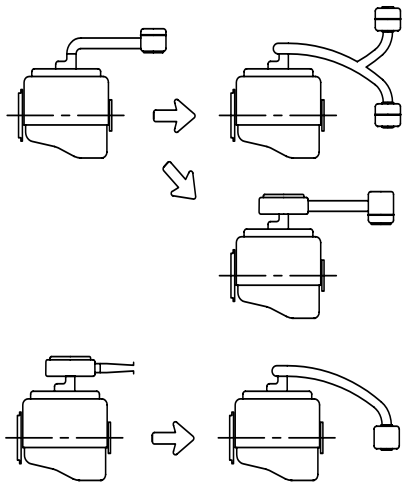
- ① trou pour bride ou bride/carter de compression  
hole for restrictor/compressor housing
- ② trou pour carter de compression ou carter/flasque  
hole for compressor housing or housing/flange
- ③ trou pour carter central ou carter/flasque  
hole for central housing or housing/flange

AUTRES POSSIBILITES :

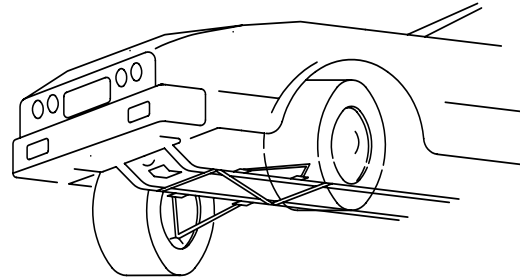
OTHER POSSIBILITES :



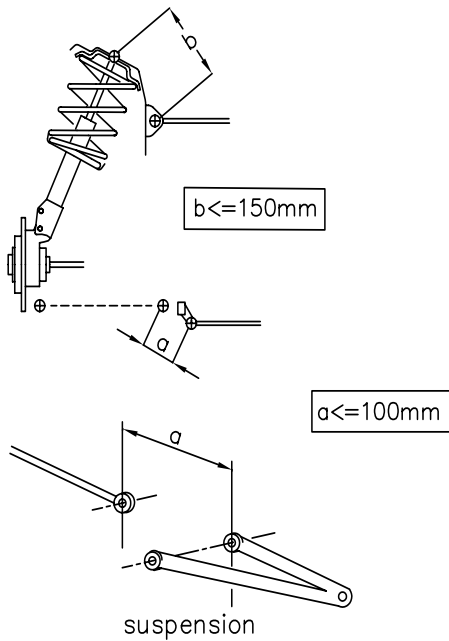
Dessin/Drawing 254-4



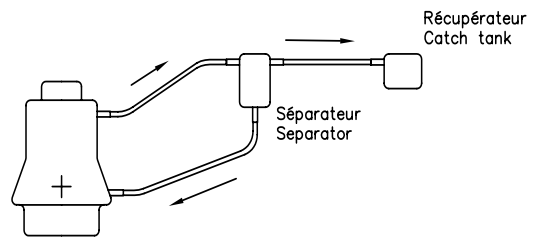
Dessin/Drawing 255-1



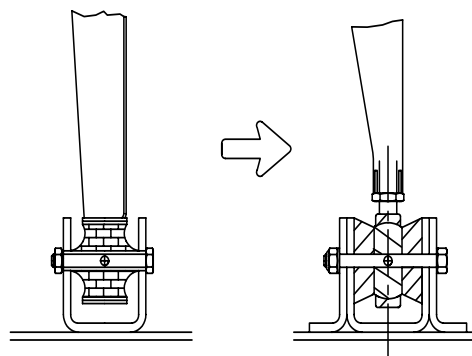
Dessin/Drawing 255-2



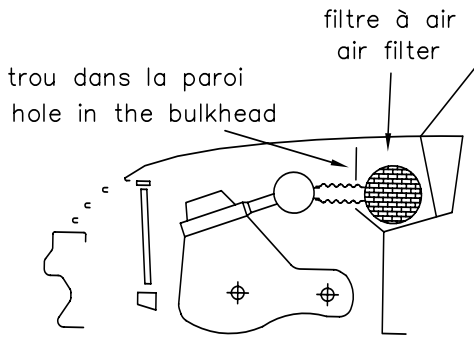
Dessin/Drawing 255-4



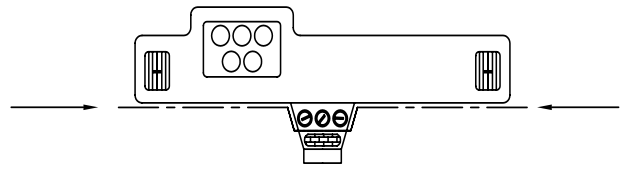
Dessin/Drawing 255-3



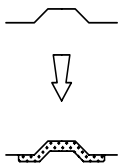
Dessin/Drawing 255-5



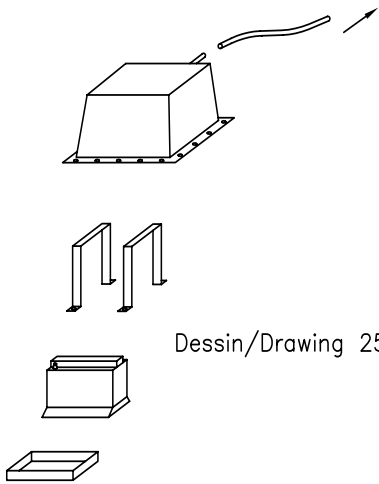
Dessin/Drawing 255-6



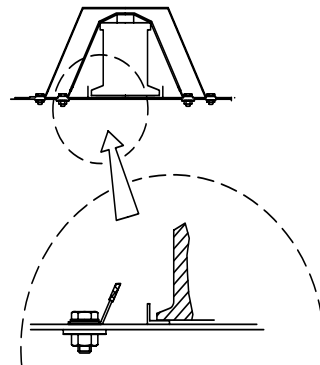
Dessin/Drawing 255-7



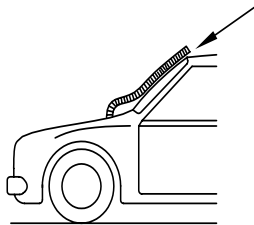
Dessin/Drawing 255-8



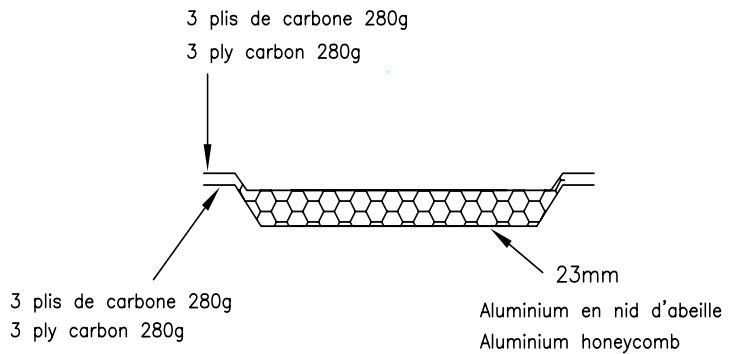
Dessin/Drawing 255-10



Dessin/Drawing 255-11

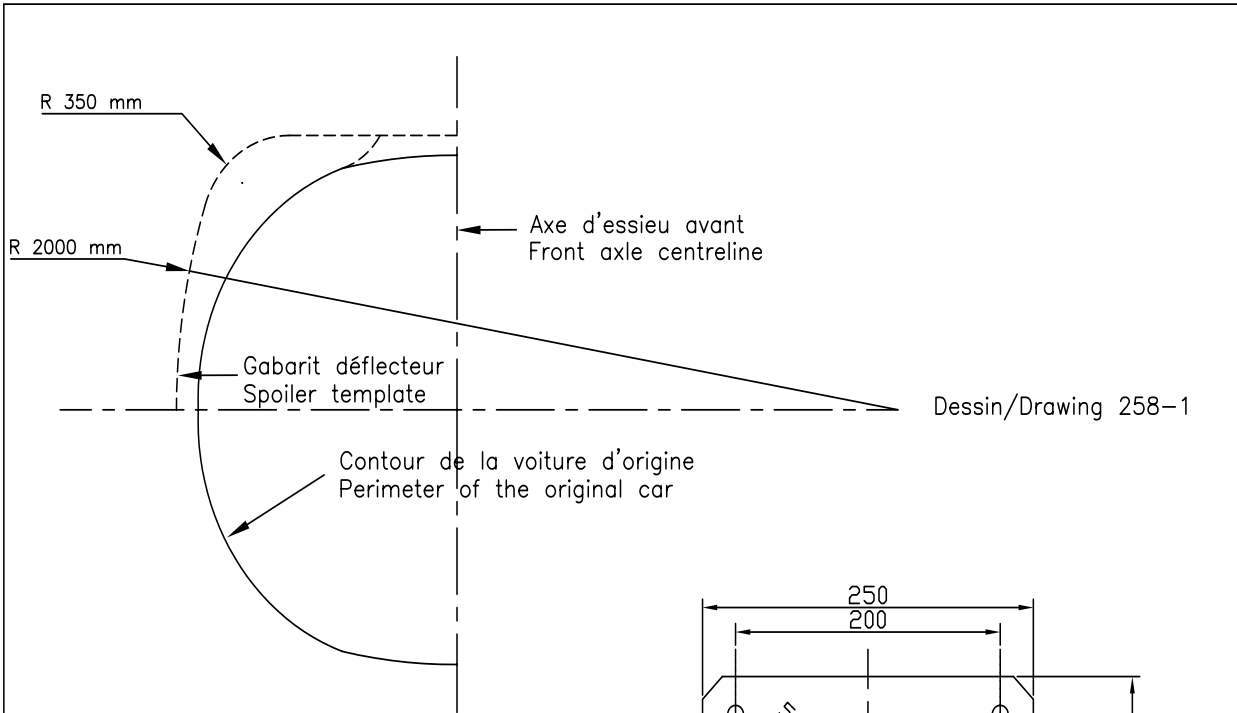


Dessin/Drawing 255-13

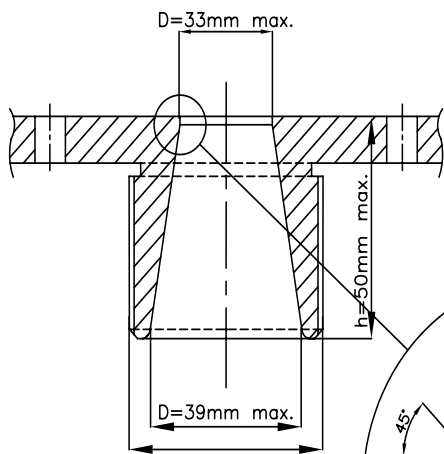


Carbone 4/4 double 280gms E620  
 Carbon 4/4 twin 280gms E620  
 Aluminium en nid d'abeille 23mm 1/8" cel4.5 ou 6.35  
 Aluminium honeycomb 23mm 1/8" cel4.5 or 6.35

Dessin/Drawing 255-14

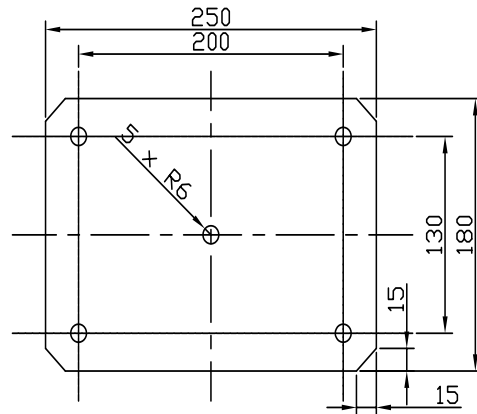


Dessin/Drawing 258-1

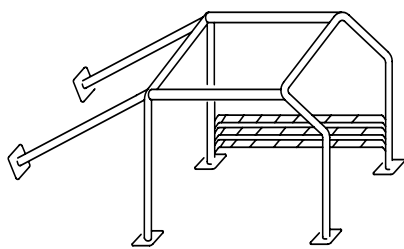
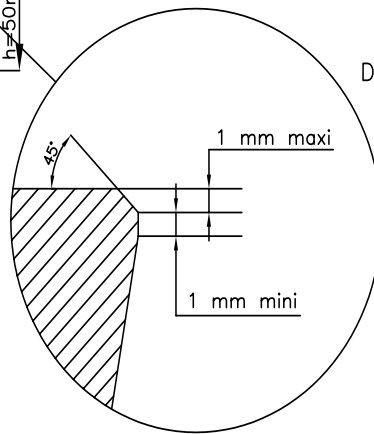


Pour vanne  
1/4 de tour  
For quarter  
turn valve

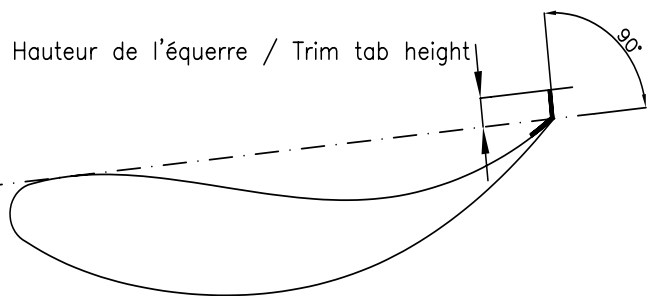
Dessin /Drawing 258-3



Dessin/Drawing 258-2

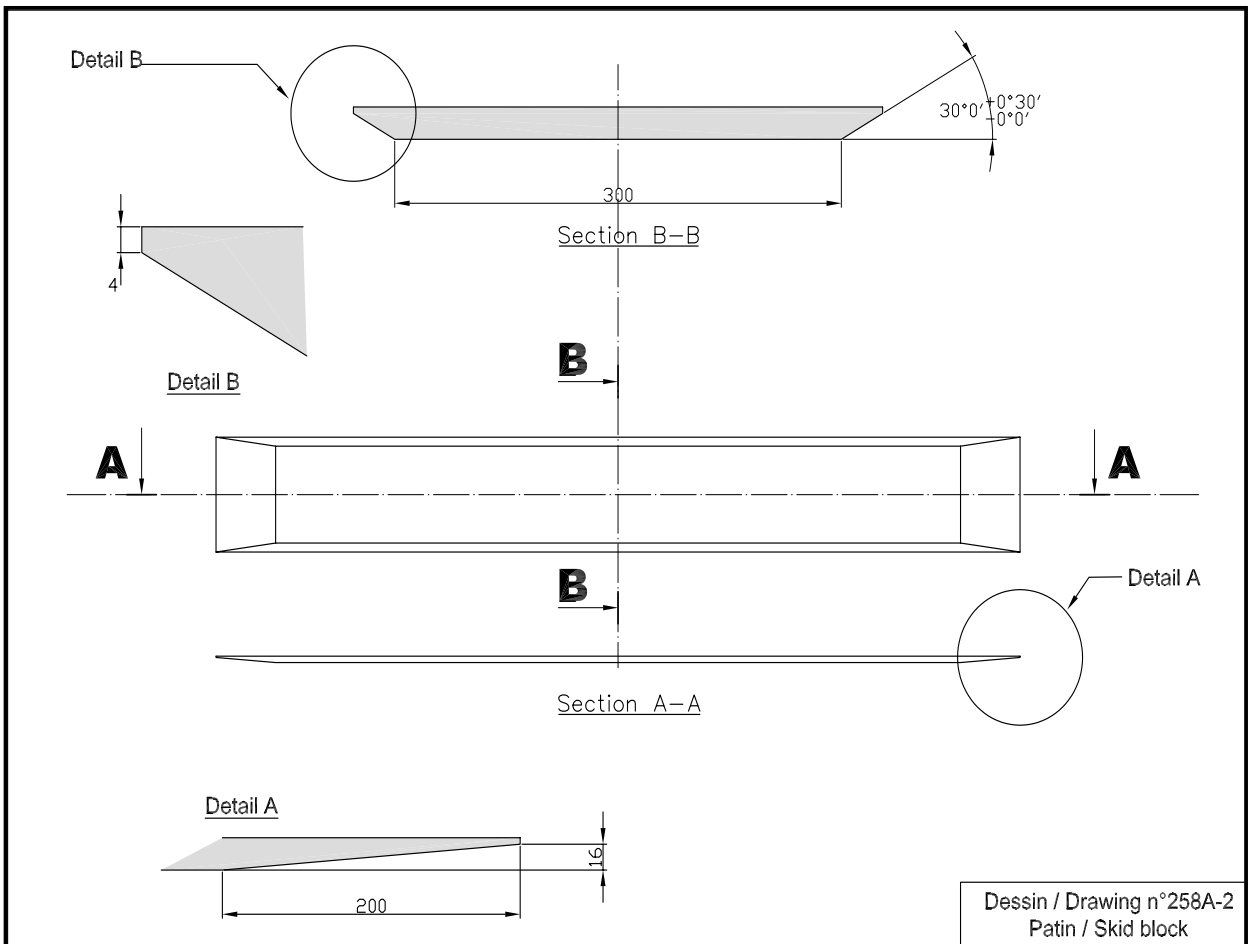
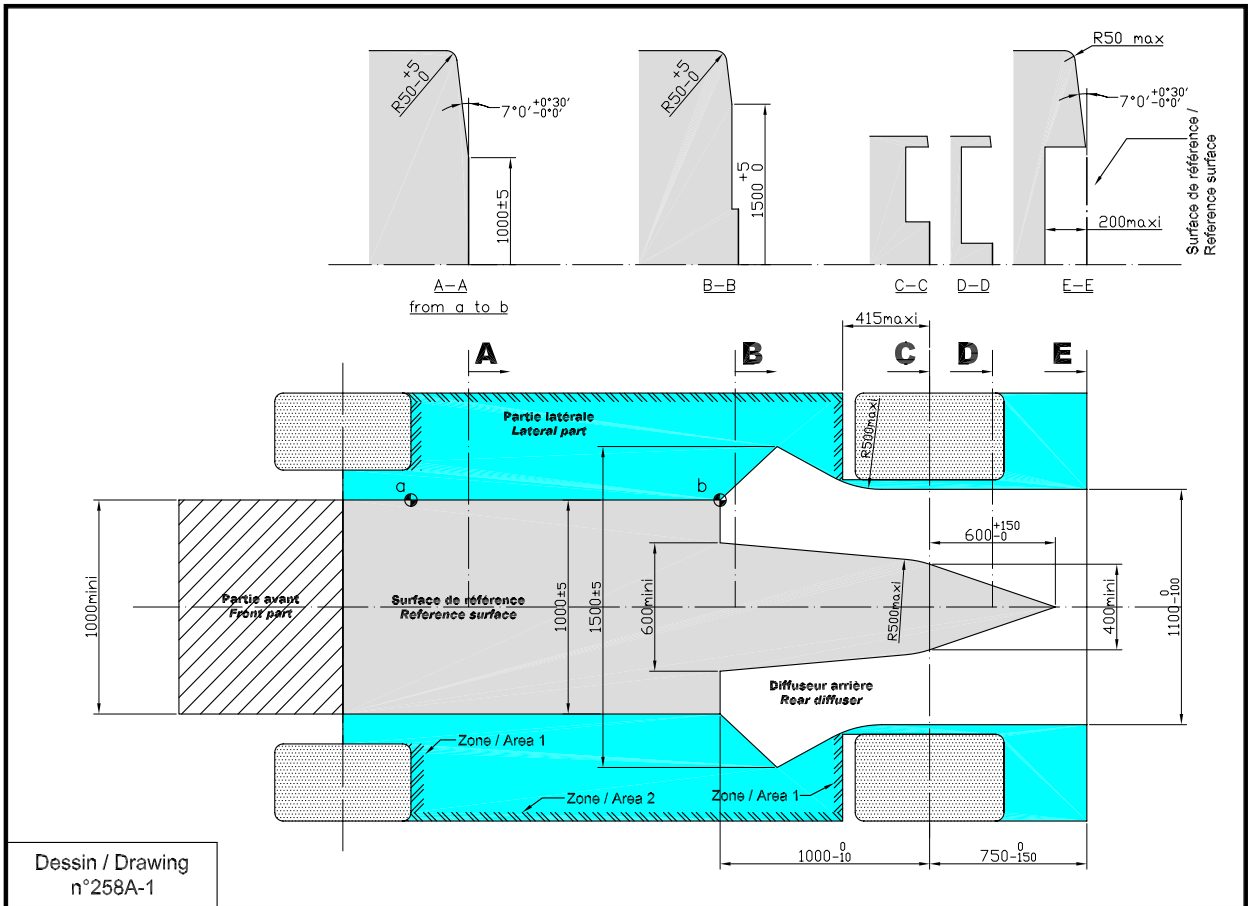


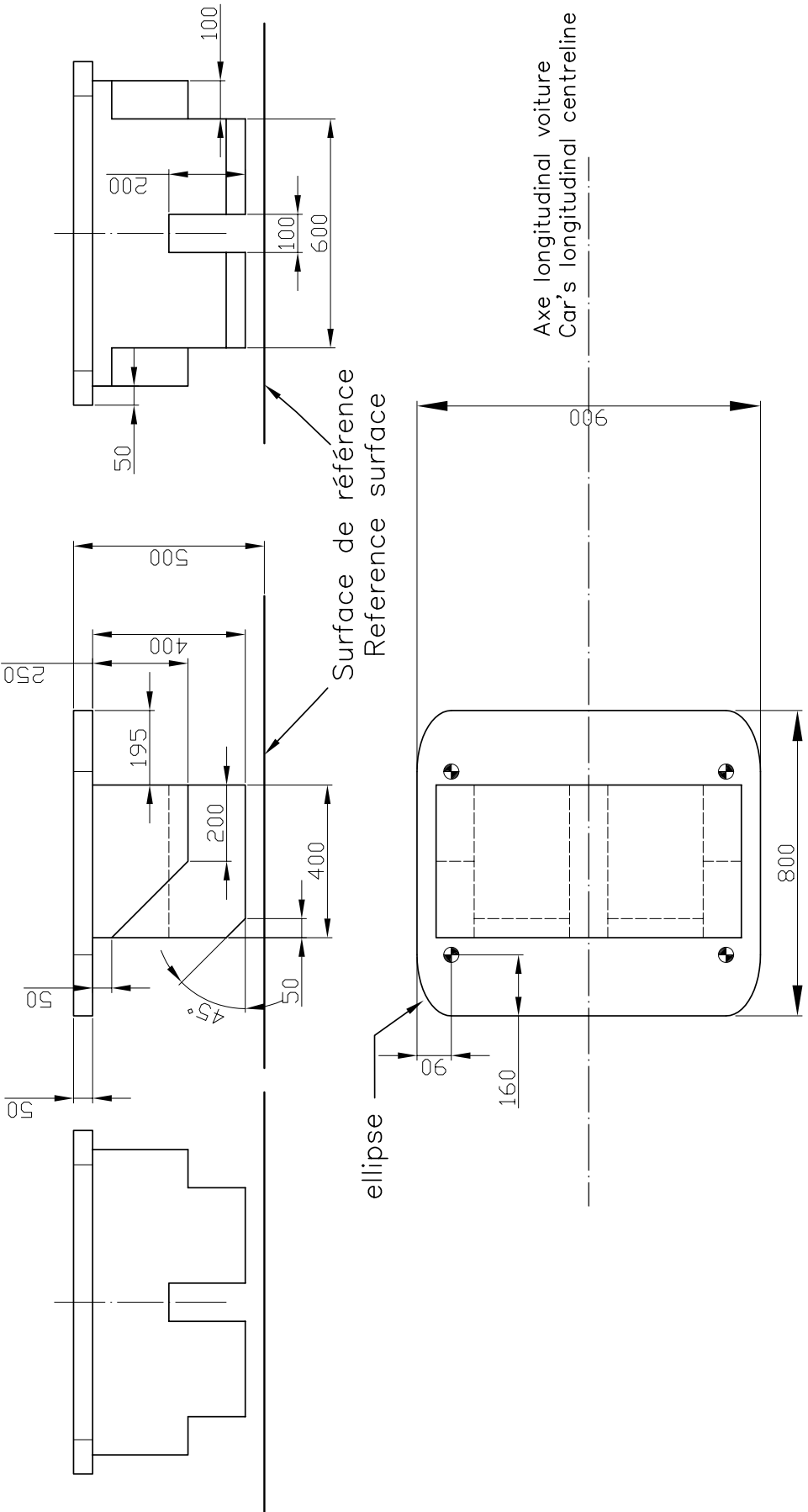
Dessin/Drawing 258-4



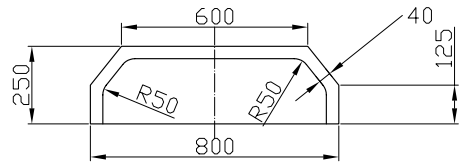
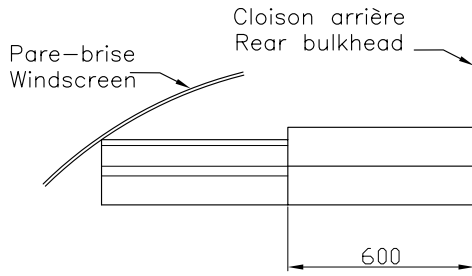
Dessin/Drawing 258-5



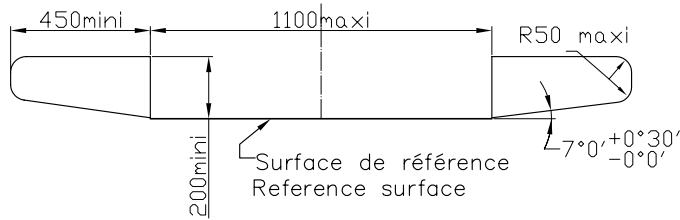




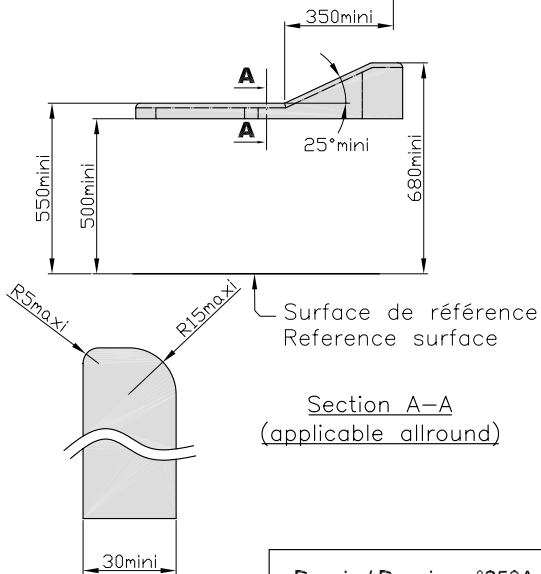
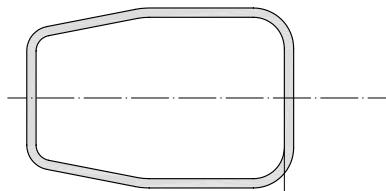
Dessin / Drawing n°258A-3  
Gabarit / Template n°1



Dessin / Drawing n°258A-4  
Gabarit / Template n°2

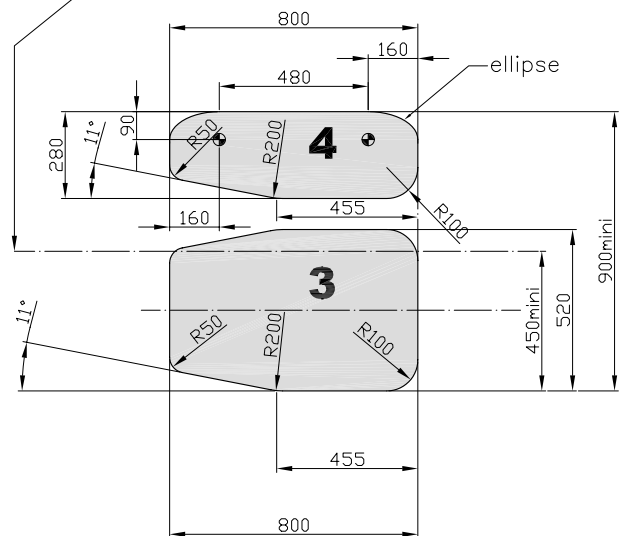


Dessin / Drawing n°258A-5

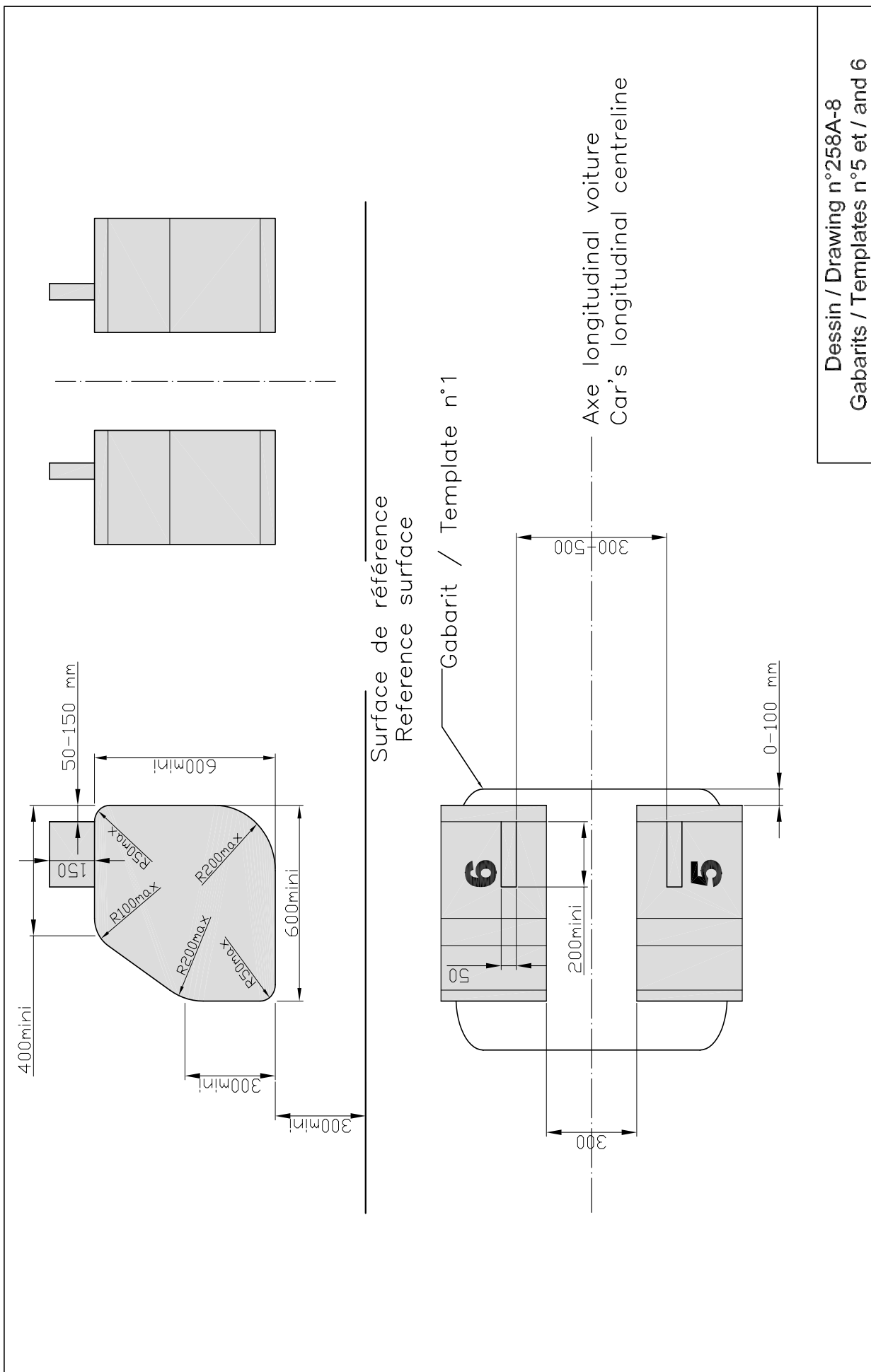


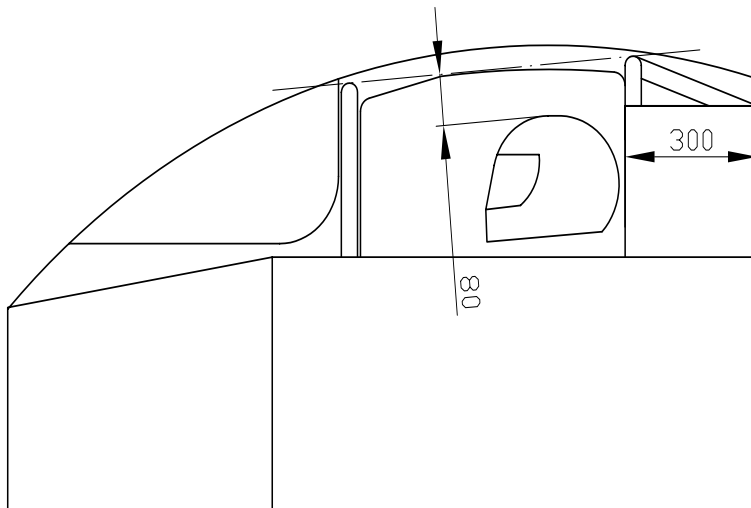
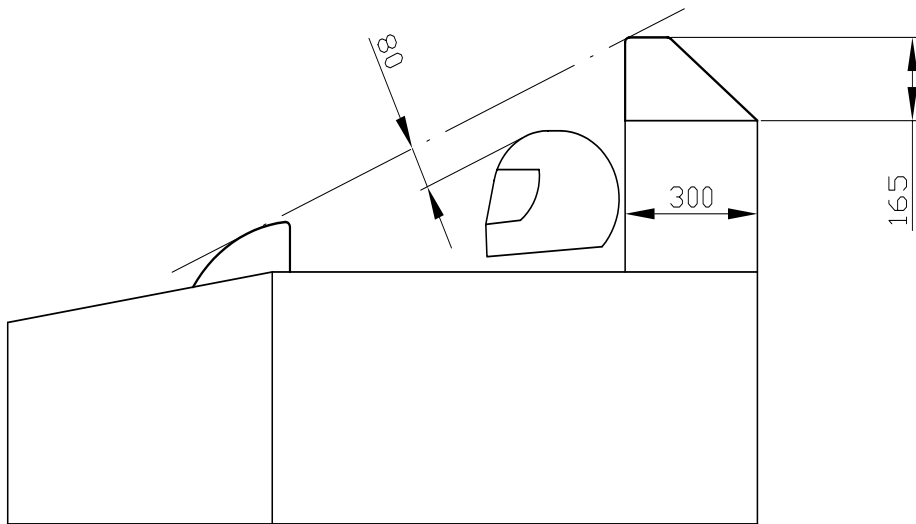
Dessin / Drawing n°258A-6

Axe longitudinal voiture  
Car's longitudinal centreline

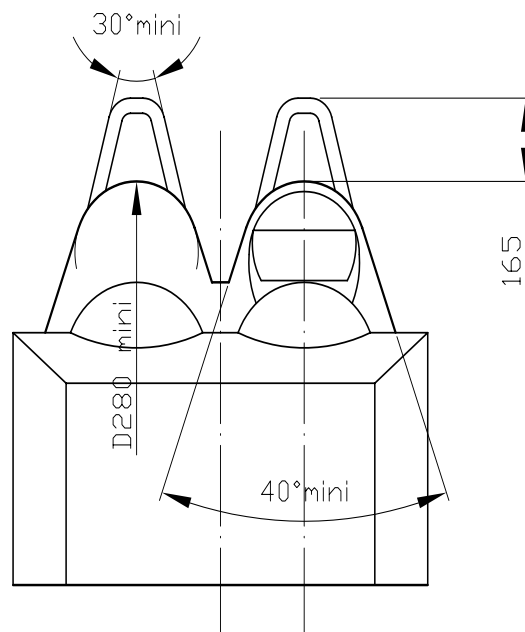


Dessin / Drawing n°258A-7  
Gabarits / Templates n° 3 and 4

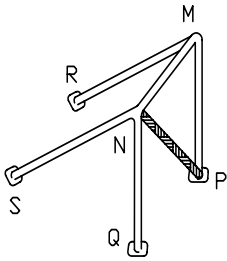




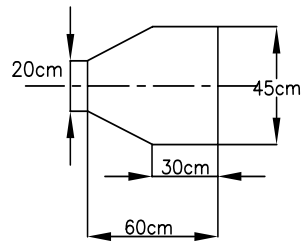
Dessin / Drawing  
258A-9



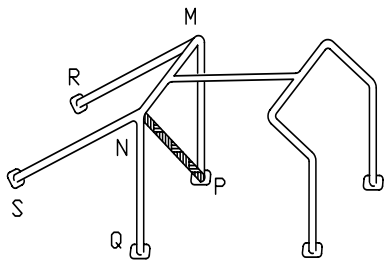
Dessin / Drawing  
258A-10



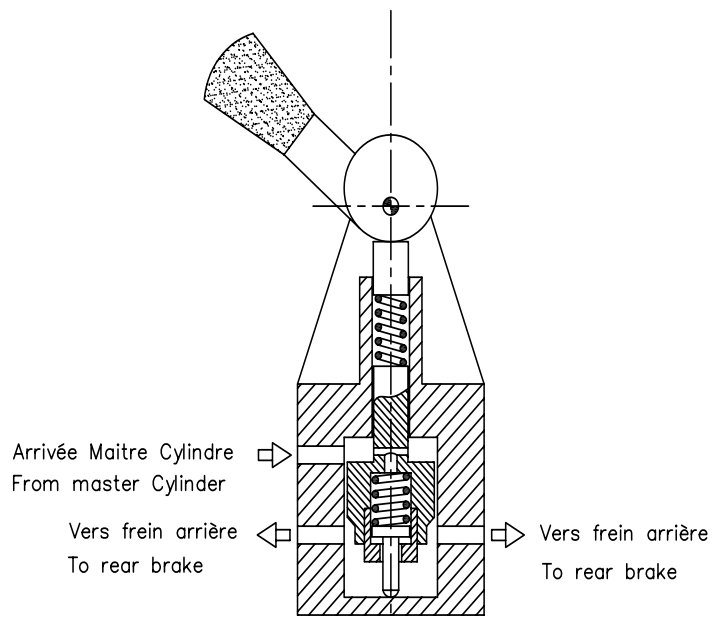
Dessin/Drawing 259-1



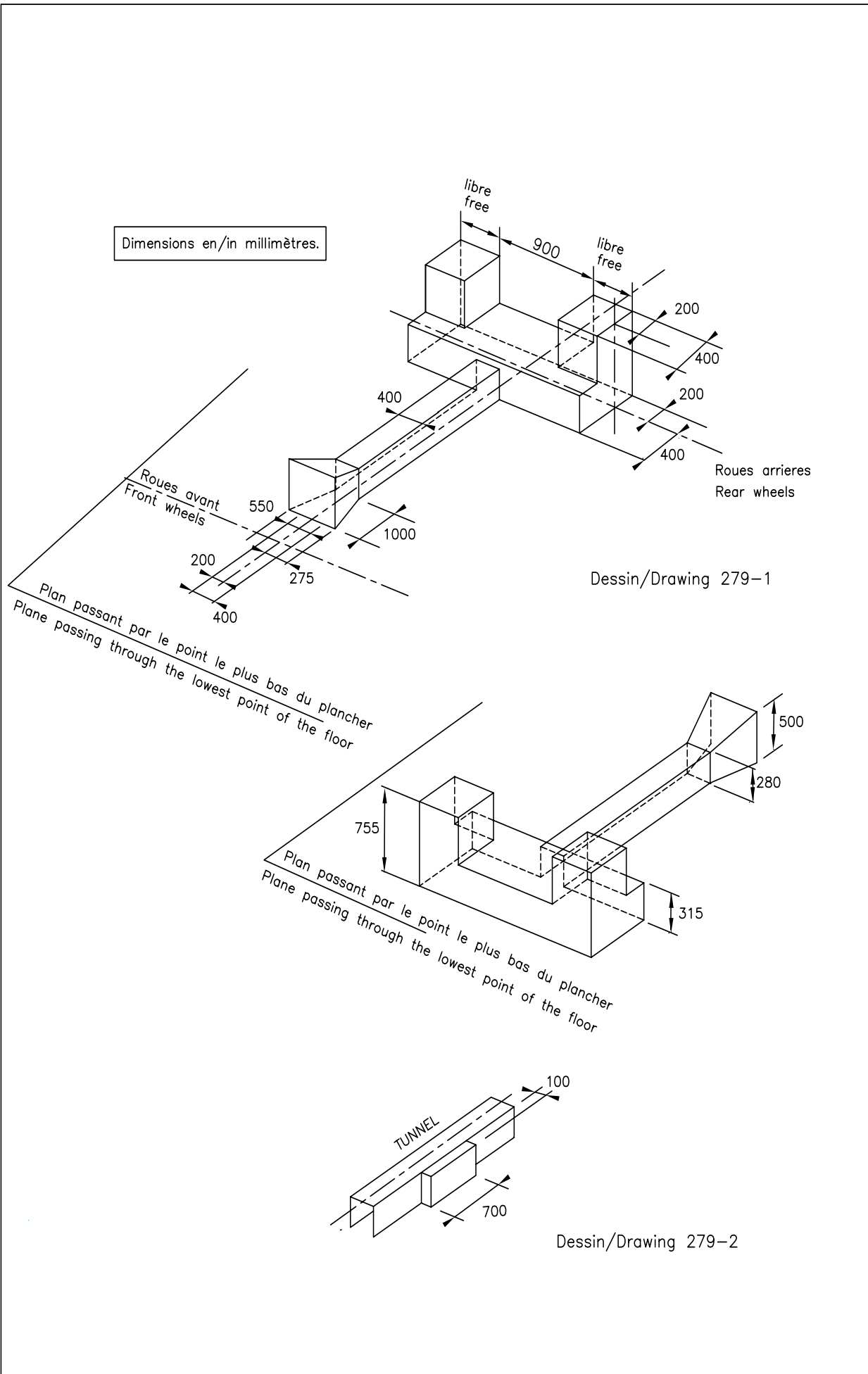
Dessin/Drawing 259-2

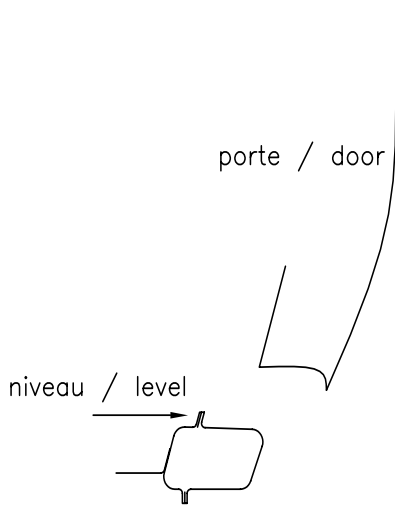


Dessin/Drawing 259-3

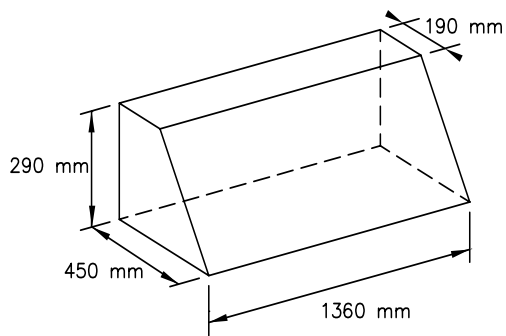
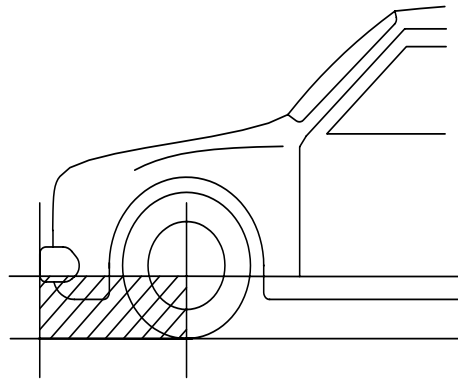


Dessin/Drawing N°263-9

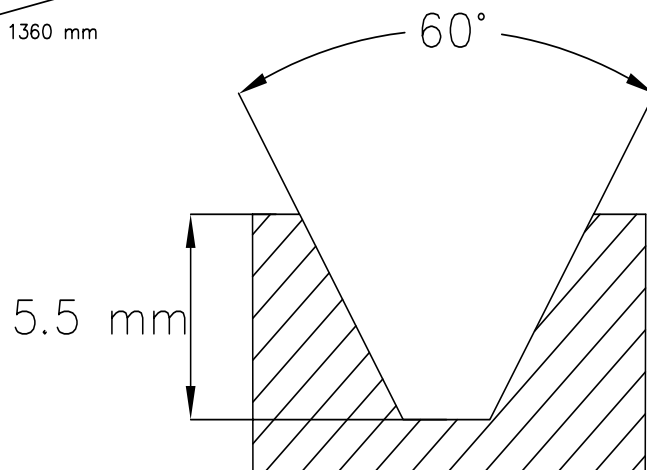




Dessin/Drawing 279-3

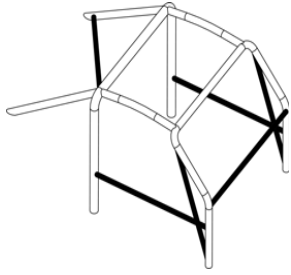


Dessin/Drawing 279-4

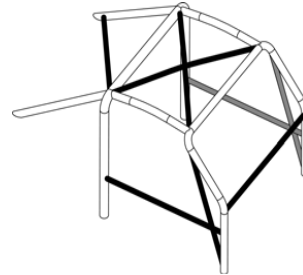


Dessin/Drawing 279-5

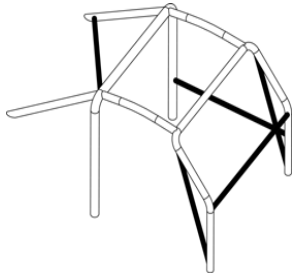




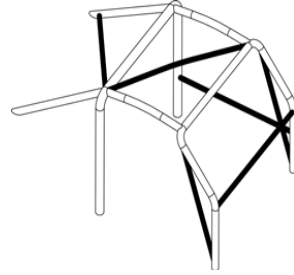
Dessin/Drawing 283-1A



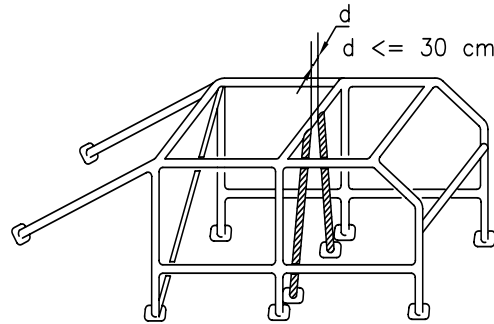
Dessin/Drawing 283-1B



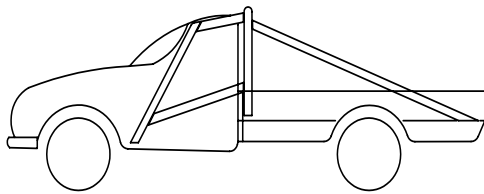
Dessin/Drawing 283-2A



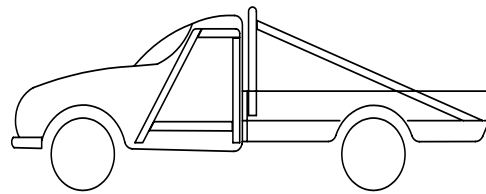
Dessin/Drawing 283-2B



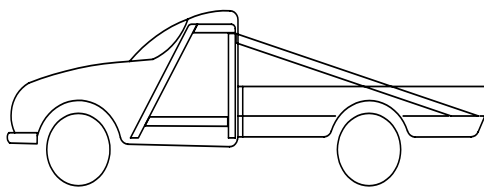
Dessin/Drawing 283-3



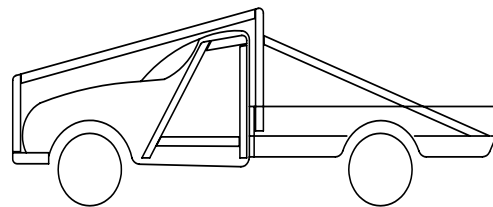
Dessin/Drawing 283-4



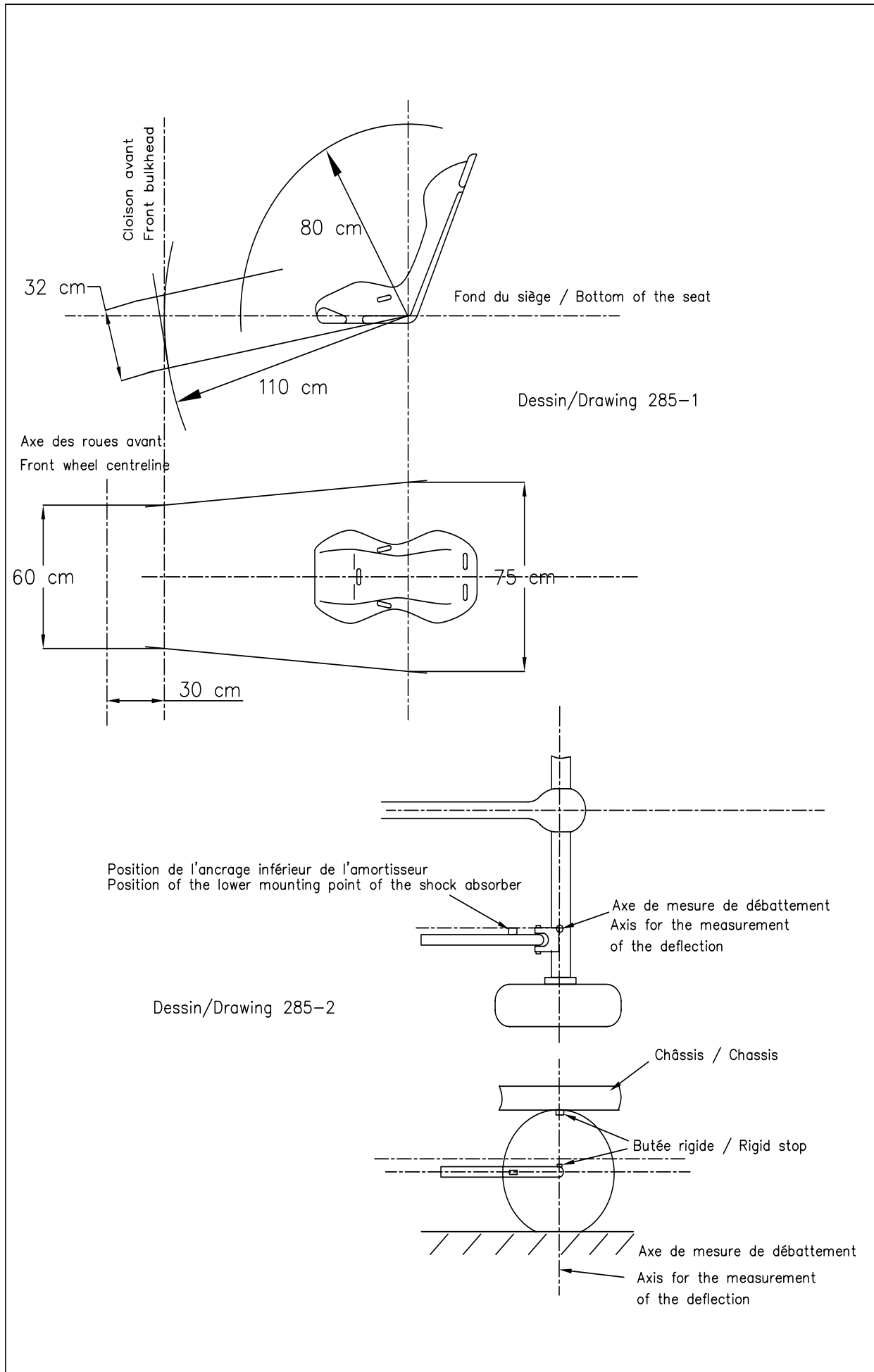
Dessin/Drawing 283-5

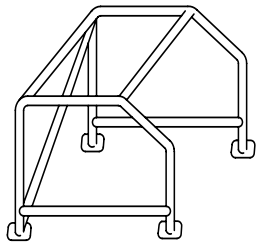


Dessin/Drawing 283-6

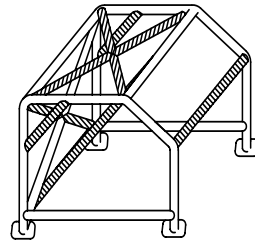


Dessin/Drawing 283-7

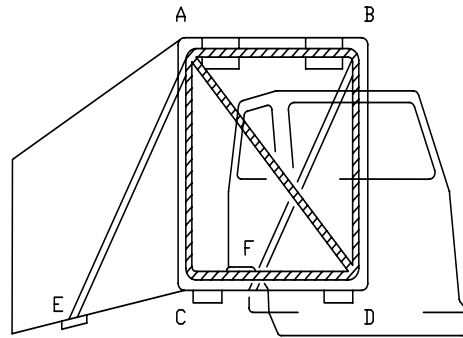




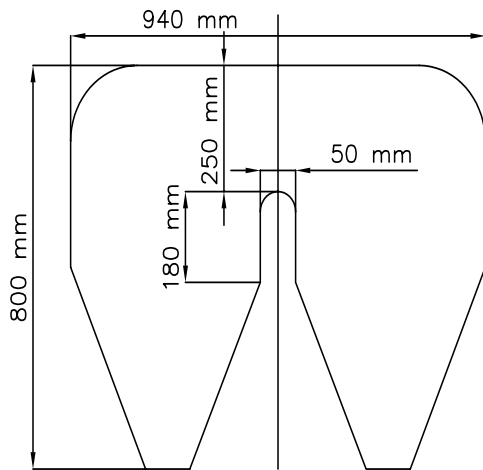
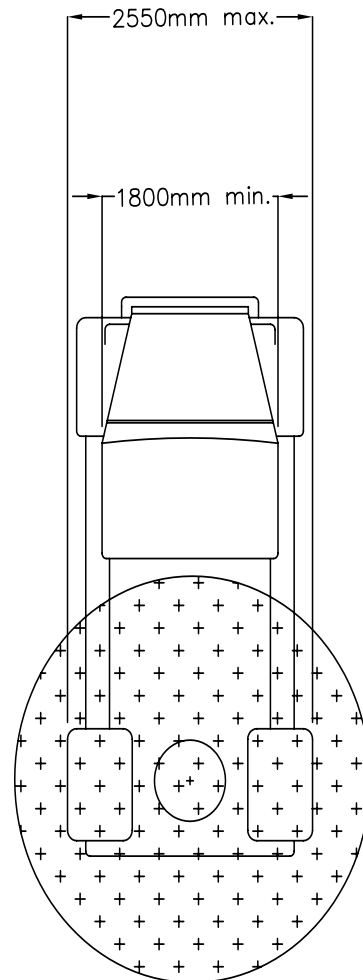
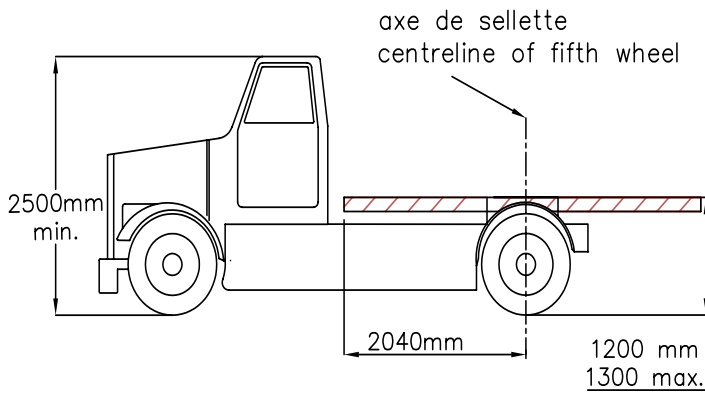
Dessin/Drawing 287-1



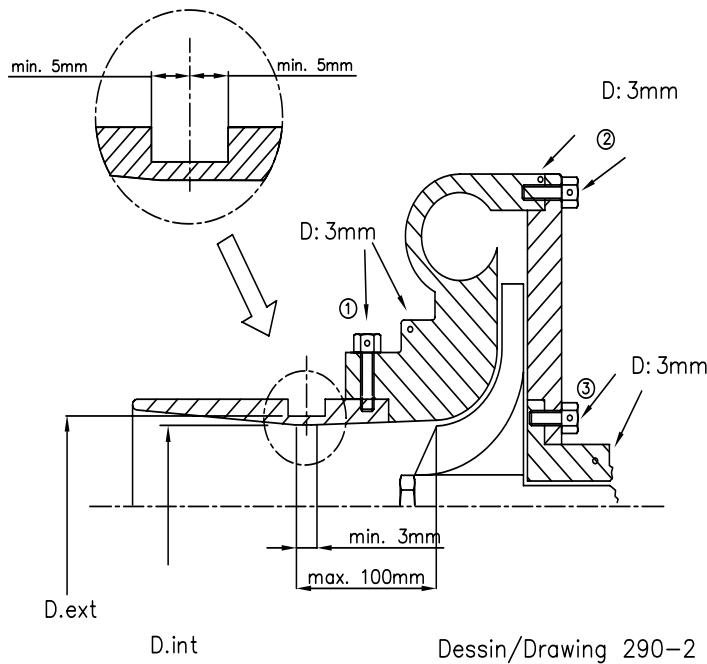
Dessin/Drawing 287-2



Dessin/Drawing 287-3

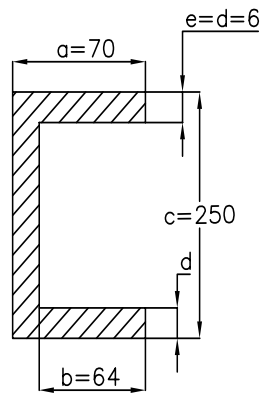


Dessin/Drawing 290-1

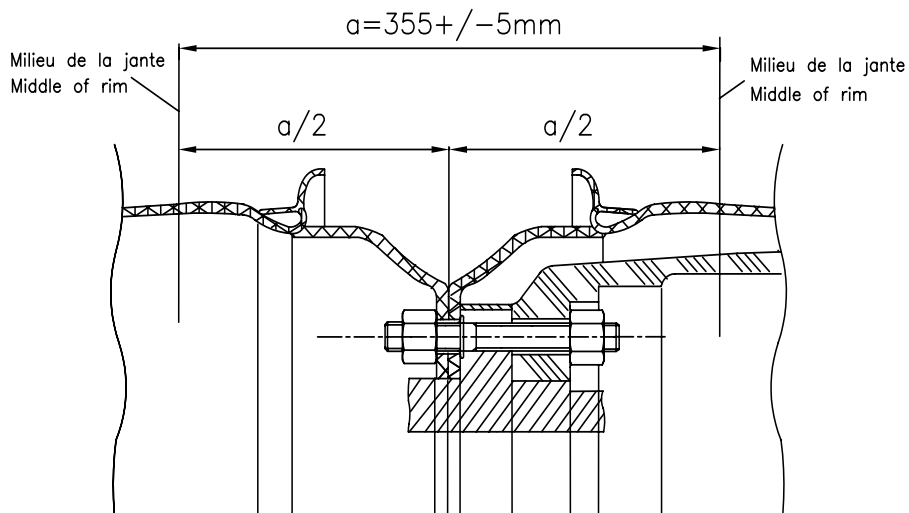


- ① Trou pour bride ou bride/carter de compression  
Hole for restrictor or restrictor/compressor housing
- ② Trou pour carter de compression ou carter/flasque  
Hole for compressor housing or housing/flange
- ③ Trou pour carter de turbine carter/flasque  
Hole for turbine housing or housing/flange

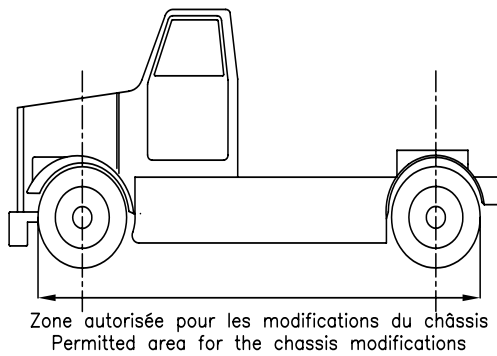
Dessin/Drawing 290-2



Dessin/Drawing 290-3

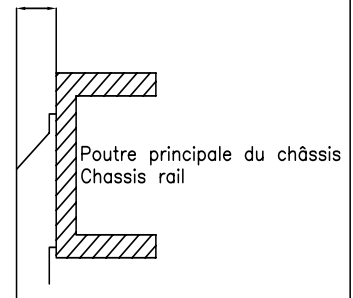


Dessin/Drawing 290-4

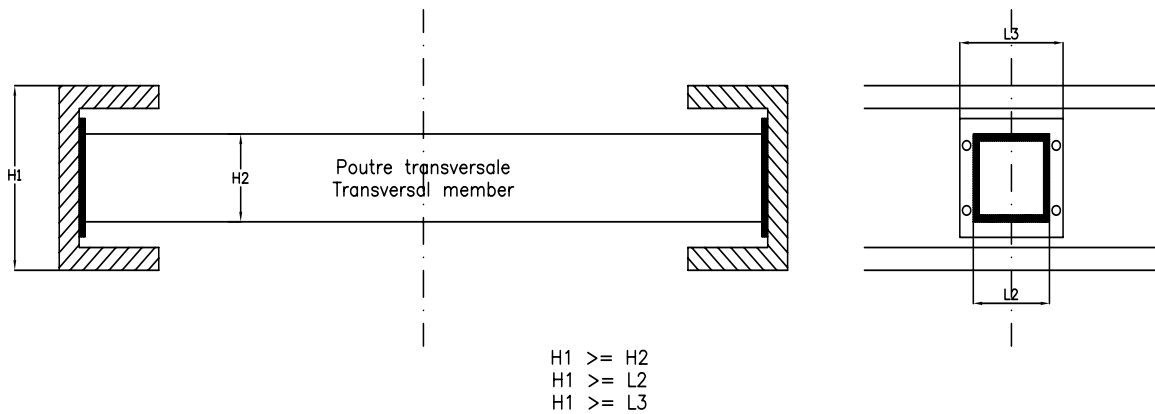


Dessin/Drawing 290-5

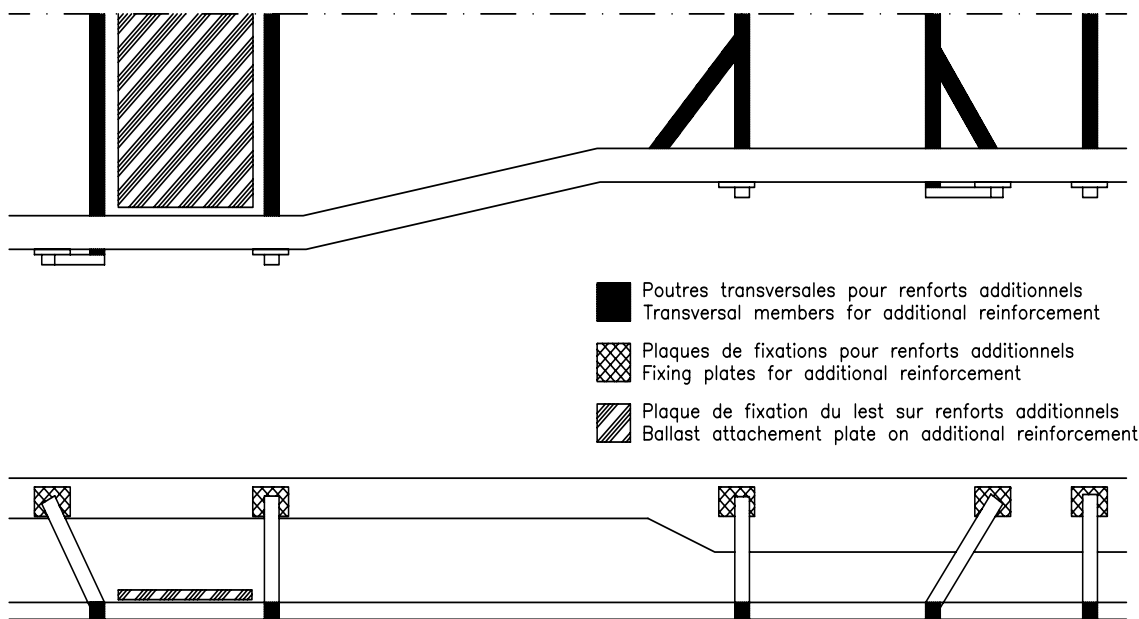
120mm max. à l'extérieur de la poutre principale du châssis  
120mm max. from the outer surface of the chassis rail



Dessin/Drawing 290-6



Dessin/Drawing 290-7



Dessin/Drawing 290-8